

Brackets



Global Experts in Orthodontics

01

GC Orthodontics
GLOBAL EXPERTS IN ORTHODONTICS

Brackets Summary

Experience Interactive	10
Experience mini metal	11
Kits Experience mini metal	13
Experience Ceramic	16
Experience Metal	23
Experience L	29
EXPERIENCE LSB (Small Base)	31
Chic.	33
LEGEND Mini / LEGEND Medium	36
AXCESS	51
Legacy & Legacy Mini	53
Standard Edgewise	56



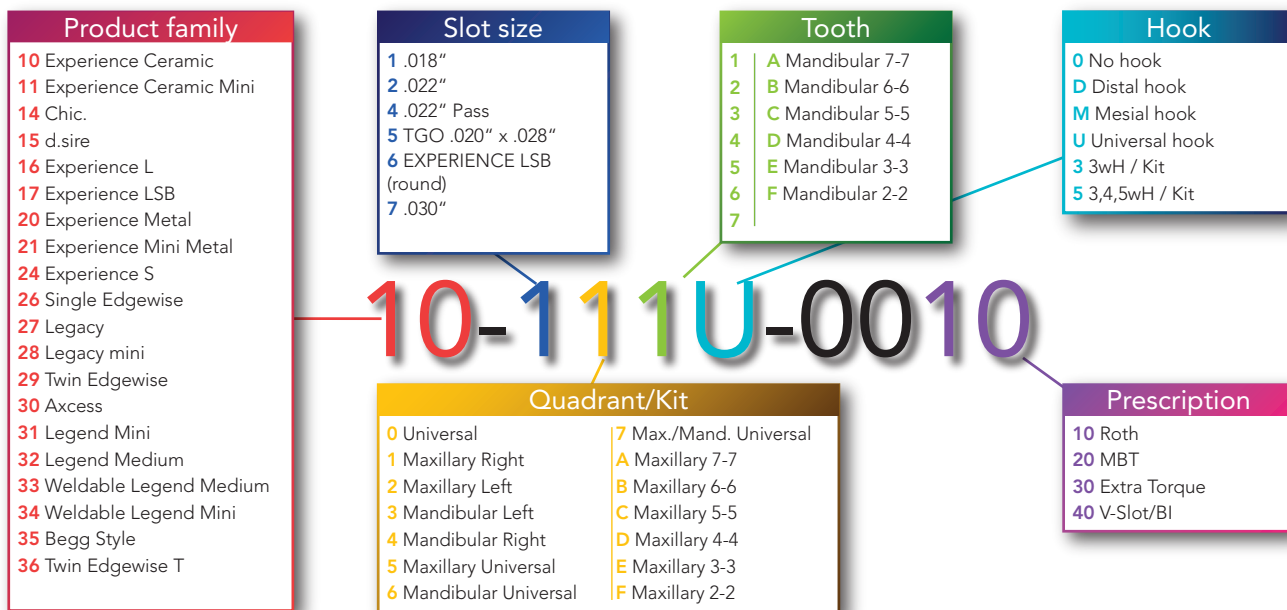
A-Box



A-Box is a gorgeous case for storing and arranging your Experience and Chic brackets. Arranged by quadrant. A box will make the case arrangement easy before bonding.

P/N: 95-00A0-0000

How are P/Ns built?

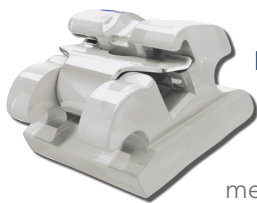


EXPERIENCE

Experience Interactive

Self-ligating brackets

The « Low friction/Control » association in the Experience interactive system means comfort, speed and precision in your treatments, without any compromise, and most often without any rotation or tipping auxiliaries. Numerous prescriptions are available. Whether you use small Dimension or full size arches at the end of treatment, you will find here the prescription you need.



Experience Ceramic

Discreet when in the mouth, its excellent bond strength and its mechanical properties made it the reference in aesthetic appliances. Its clip is rhodium-coated and melts into the look of the ceramic body of the bracket. First order information is compatible with Experience Metal brackets. When both bracket types are present on the same arch, your appliance remains consistent...



Experience L

Experience L is THE lingual interactive orthodontic bracket. Its easy-access golden clip makes archwire changes more practitioner-accessible and shortens treatment time to the greatest satisfaction of patients. Its small size limits speech problems and bond failures.



Experience Metal

Interactive brackets became the worldwide best-selling self-ligating systems. Low friction and control are the most sought-after parameters in orthodontic appliances. Experience Metal gives you more:

- accuracy of the information the practitioner selected
- perfectly adapted anatomical bases (micro sandblasted), limiting bond failures
- tooth numbering etched on the base



Experience LSB

A lingual bracket similar to Experience L, with a smaller base. It is the tool of choice for aesthetic corrections in the anterior segment.

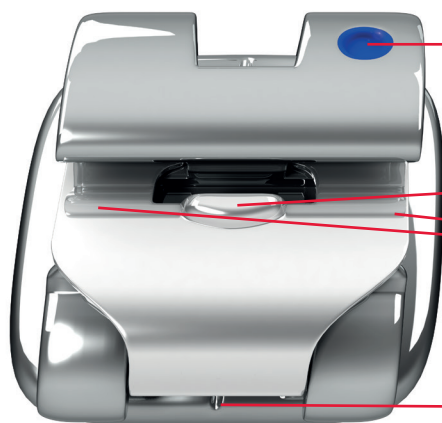
Invisible, it meets the requirements of an adult patienthood for cosmetic indications. It can be bonded directly on the lingual surfaces of the teeth or with a transfer tray.



Experience mini metal

Experience Mini Bracket achieves the high standards which modern Orthodontics demands:

- A self-ligating bracket with a profile which is marginally higher than a standard attachment.
- A clinical choice of passive or interactive brackets for the cuspids and bicuspids.
- An easy to open, strong and reliable clip.
- Exacting standards of manufacturing ensures full three dimensional control.
- Generous under tie wing area to engage elastomeric ligatures and chains



Disto Gingival Color Coded ID

Clip-opening system on the buccal face

Spring-clip with two contact points; fully covering the slot

Long axis line for ideal positioning. Rhomboid bracket

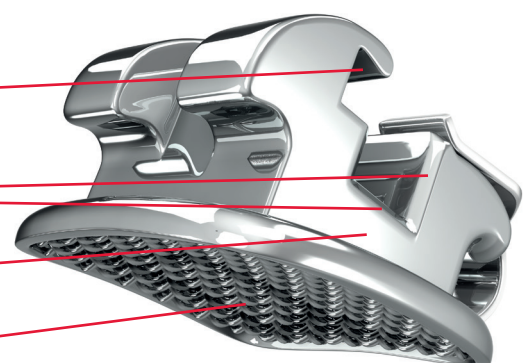


Interactive or passive clip

Triple chamfered slot entry to prevent archwire binding

Low profile. Torque-in-base

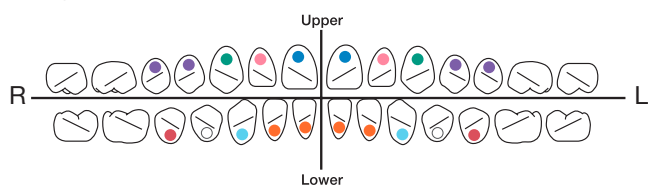
micro etched mesh



EXPERIENCE

Color codes

The distal-gingival color code allows an identification of the bracket to prevent bonding errors. For some prescriptions, these color codes may be different on the bicuspids.



Instruments

Instrument for handling Experience mini metal brackets.



The EM-Tool is autoclavable and allows the clip-opening through a simple torsion movement, after positioning the blade in front of the bracket slot.

P/N. 50-2130-0000

Experience mini metal Roth Type

Maxillary

Tooth	Torque (°)	Angulation (°)	Rotation (°)	P/N			
				.018"		.022"	
				R	L	R	L
U 1	12°	5°	0°	21-1110-0010	21-1210-0010	21-2110-0010	21-2210-0010
U 2	8°	9°	0°	21-1120-0010	21-1220-0010	21-2120-0010	21-2220-0010
U 3	-2°	13°	4°m	21-1130-0010	21-1230-0010	21-2130-0010	21-2230-0010
U 3/Hk	-2°	13°	4°m	21-113D-0010	21-123D-0010	21-213D-0010	21-223D-0010
U 3/Passive	-2°	10°	4°m	—	—	21-413D-0010	21-423D-0010
U 4-5	-7°	0°	2°d	21-1140-0010	21-1240-0010	21-2140-0010	21-2240-0010
U 4-5/Hk distal	-7°	0°	2°d	21-114D-0010	21-124D-0010	21-214D-0010	21-224D-0010
U 4-5 Passive	-7°	0°	2°d	—	—	21-4140-0010	21-4240-0010
U 4-5/Hk Passive	-7°	0°	2°d	—	—	21-414D-0010	21-424D-0010



Mandibular

				P/N			
Tooth	Torque (°)	Angulation (°)	Rotation (°)	.018"		.022"	
				R	L	R	L
L 1-2	-1°	2°	0°	21-1410-0010	21-1310-0010	21-2410-0010	21-2310-0010
L 3	-11°	7°	2°m	21-1430-0010	21-1330-0010	21-2430-0010	21-2330-0010
L 3/Hk	-11°	7°	2°m	21-143D-0010	21-133D-0010	21-243D-0010	21-233D-0010
L 3/Hk Passive	-11°	7°	2°m	—	—	21-443D-0010	21-433D-0010
L 4	-17°	-1°	4°d	21-1440-0010	21-1340-0010	21-2440-0010	21-2340-0010
L 4/Hk	-17°	-1°	4°d	21-144D-0010	21-134D-0010	21-244D-0010	21-234D-0010
L 4/Passive	-17°	-1°	4°d	—	—	21-4440-0010	21-4340-0010
L 4/Hk Passive	-17°	-1°	4°d	—	—	21-444D-0010	21-434D-0010
L 5	-22°	-1°	4°d	21-1450-0010	21-1350-0010	21-2450-0010	21-2350-0010
L 5/Hk	-22°	-1°	4°d	21-145D-0010	21-135D-0010	21-245D-0010	21-235D-0010
L 5 Passive	-22°	-1°	4°d	—	—	21-4450-0010	21-4350-0010
L 5/Hk Passive	-22°	-1°	4°d	—	—	21-445D-0010	21-435D-0010

Kits Experience mini metal

Prescription	Upper arch	Lower arch	Hook on	P/N	
				.018"	.022"
Roth Type/Interactive	5-5	5-5	—	21-1CC0-0010	21-2CC0-0010
Roth Type/Interactive	5-5	5-5	3	21-1CC3-0010	21-2CC3-0010
Roth Type/Interactive	5-5	5-5	3,4,5	21-1CC5-0010	21-2CC5-0010
MBT*/Interactive	5-5	5-5	—	—	21-2CC0-0020
MBT*/Interactive	5-5	5-5	3	—	21-2CC3-0020
MBT*/Interactive	5-5	5-5	3,4,5	—	21-2CC5-0020

EXPERIENCE

Experience mini metal MBT*

Maxillary

			P/N .022"			
Tooth	Torque (°)	Angulation (°)	Interactive		Passive	
			R	L	R	L
U 1	17°	4°	21-2110-0020	21-2210-0020	21-4110-0020	21-4210-0020
U 2	10°	8°	21-2120-0020	21-2220-0020	21-4120-0020	21-4220-0020
U 3	-7°	8°	21-2130-0020	21-2230-0020	21-4130-0020	21-4230-0020
U 3/Hk	-7°	8°	21-213D-0020	21-223D-0020	21-413D-0020	21-423D-0020
U 4	-7°	0°	21-2540-0020	21-2540-0020	21-4540-0020	21-4540-0020
U 4/Hk	-7°	0°	21-214D-0020	21-224D-0020	21-414D-0020	21-424D-0020
U 5	-7°	0°	21-2550-0020	21-2550-0020	21-4550-0020	21-4550-0020
U 5/Hk	-7°	0°	21-215D-0020	21-225D-0020	21-415D-0020	21-425D-0020

Mandibular

			P/N .022"			
Tooth	Torque (°)	Angulation (°)	Interactive		Passive	
			R	L	R	L
L 1-2	-6°	0°	21-2610-0020	21-2610-0020	21-4610-0020	21-4610-0020
L 3	-6°	3°	21-2430-0020	21-2330-0020	21-4430-0020	21-4330-0020
L 3/Hk	-6°	3°	21-243D-0020	21-233D-0020	21-443D-0020	21-433D-0020
L 4	-12°	2°	21-2440-0020	21-2340-0020	21-4440-0020	21-4340-0020
L 4/Hk	-12°	2°	21-244D-0020	21-234D-0020	21-444D-0020	21-434D-0020
L 5	-17°	2°	21-2450-0020	21-2350-0020	21-4450-0020	21-4350-0020
L 5/Hk	-17°	2°	21-245D-0020	21-235D-0020	21-445D-0020	21-435D-0020



Aesthetic Mini metal: Rhodium coated



A first for the Orthodontic industry. The Experience mini metal aesthetic brackets have a Rhodium coated surface and combined with Initialloy and Bio-active aesthetic archwires you have the ideal combination. Unobtrusive, efficient and excellent patient comfort.

Maxillary

Tooth	Torque	Angulation	Rotation	Part numbers			
				.018"		.022"	
				R	L	R	L
U 1	12°	5°	0°	24-1110-0010	24-1210-0010	24-2110-0010	24-2210-0010
U 2	8°	9°	0°	24-1120-0010	24-1220-0010	24-2120-0010	24-2220-0010
U 3	-2°	13°	4°m	24-1130-0010	24-1230-0010	24-2130-0010	24-2230-0010
U 3/Hk	-2°	13°	4°m	24-113D-0010	24-123D-0010	24-213D-0010	24-223D-0010
U 4-5	-7°	0°	2°d	24-1140-0010	24-1240-0010	24-2140-0010	24-2240-0010
U 4-5/Hk distal	-7°	0°	2°d	24-114D-0010	24-124D-0010	24-214D-0010	24-224D-0010

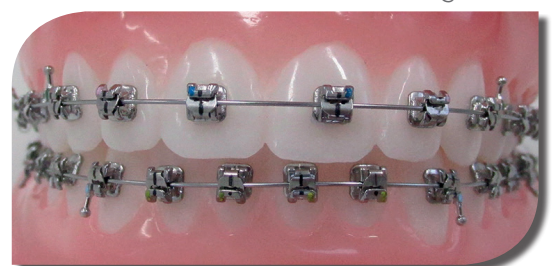
Mandibular

Tooth	Torque	Angulation	Rotation	Part numbers			
				.018"		.022"	
				R	L	R	L
L 1-2	-1°	2°	0°	24-1410-0010	24-1310-0010	24-2410-0010	24-2310-0010
L 3	-11°	7°	2°m	24-1430-0010	24-1330-0010	24-2430-0010	24-2330-0010
L 3/Hk	-11°	7°	2°m	24-143D-0010	24-133D-0010	24-243D-0010	24-233D-0010
L 4	-17°	-1°	4°d	24-1440-0010	24-1340-0010	24-2440-0010	24-2340-0010
L 4/Hk	-17°	-1°	4°d	24-144D-0010	24-134D-0010	24-244D-0010	24-234D-0010
L 5	-22°	-1°	4°d	24-1450-0010	24-1350-0010	24-2450-0010	24-2350-0010
L 5/Hk	-22°	-1°	4°d	24-145D-0010	24-135D-0010	24-245D-0010	24-235D-0010

With Rhodium coating



Without Rhodium coating

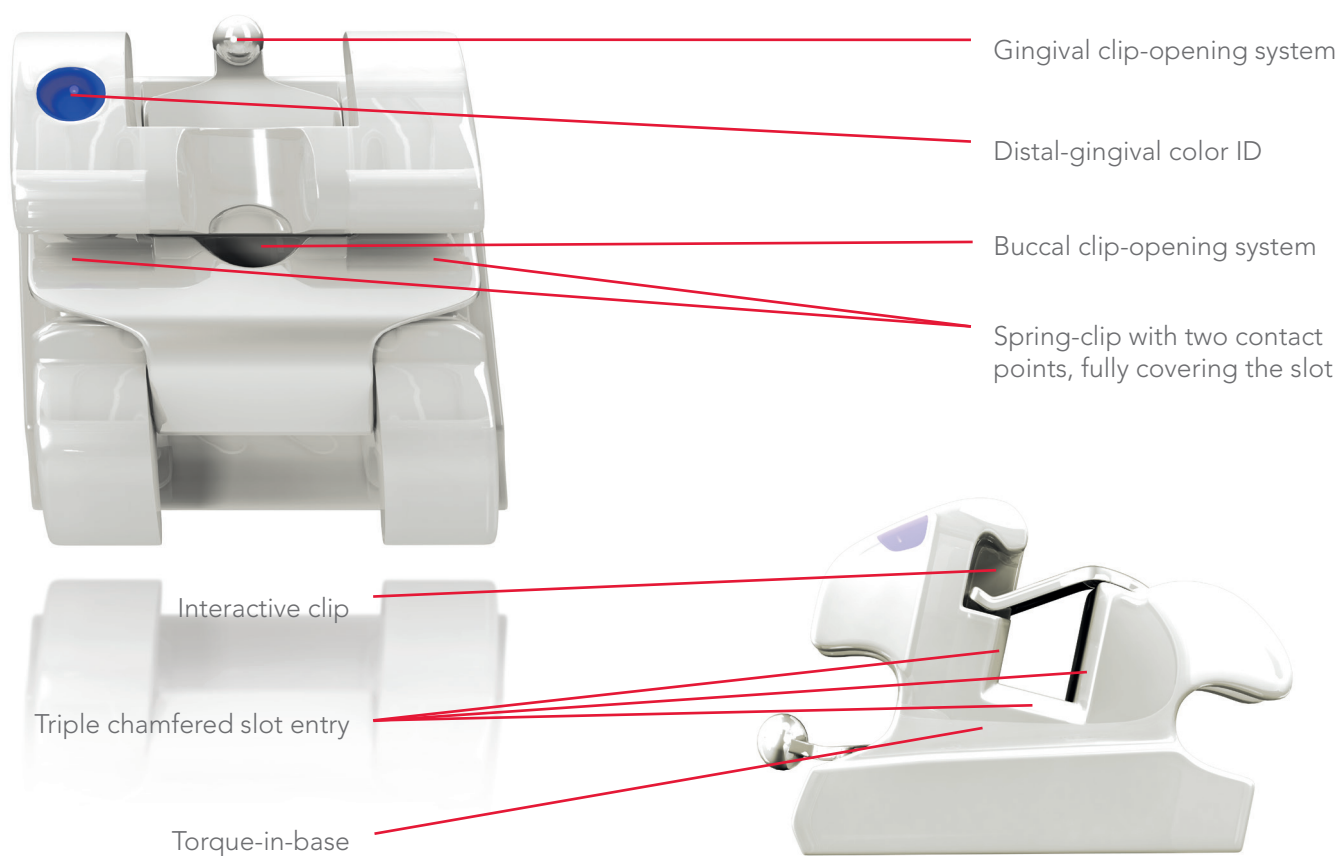


EXPERIENCE

Experience Ceramic

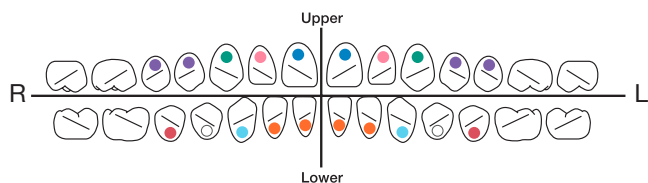
Hi Aesthetic **SL** Product

This Ceramic Injection Molded aesthetic appliance features all the mechanical properties and the strength of a metal bracket. Quite inconspicuous thanks to its rhodium-coated clip.



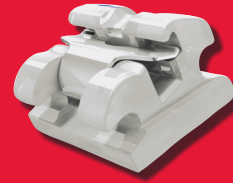
Color codes

The distal-gingival color code allows an identification of the bracket to prevent bonding errors. For some prescriptions, these color codes may be different on the bicuspids.



Rhodium Coated

The « Rhodium coated » technology, is used for Initialloy and BioActive archwires as well. Combined with Experience Ceramic, the aesthetics of the appliance is unrivalled. (See the Archwires Dimension)



Experience Ceramic Roth Type

Maxillary

					P/N			
Tooth	I/O mm	Torque (°)	Angulation (°)	Rotation (°)	.018"		.022"	
					R	L	R	L
U 1	.81	12°	5°	0°	10-1110-0010	10-1210-0010	10-2110-0010	10-2210-0010
U 2	1.07	8°	9°	0°	10-1120-0010	10-1220-0010	10-2120-0010	10-2220-0010
U 3	.46	-2°	13°	4°m	10-1130-0010	10-1230-0010	10-2130-0010	10-2230-0010
U 3/Hk	.46	-2°	13°	4°m	10-113U-0010	10-123U-0010	10-213U-0010	10-223U-0010
U 4-5	.46	-7°	0°	2°d	10-1140-0010	10-1240-0010	10-2140-0010	10-2240-0010
U 4-5/Hk	.46	-7°	0°	2°d	10-114U-0010	10-124U-0010	10-214U-0010	10-224U-0010

Mandibular

					P/N			
Tooth	I/O mm	Torque (°)	Angulation (°)	Rotation (°)	.018"		.022"	
					R	L	R	L
L 1-2	1.17	0°	2°	0°	10-1410-0010	10-1310-0010	10-2410-0010	10-2310-0010
L 3	.56	-11°	7°	2°m	10-1430-0010	10-1330-0010	10-2430-0010	10-2330-0010
L 3/Hk	.56	-11°	7°	2°m	10-143U-0010	10-133U-0010	10-243U-0010	10-233U-0010
L 4*(Exp. M)	.38	-17°	0°	4°d	20-1440-0010	20-1340-0010	20-2440-0010	20-2340-0010
L 4/Hk*(Exp. M)	.38	-17°	0°	4°d	20-144D-0010	20-134D-0010	20-244D-0010	20-234D-0010
L 5*(Exp. M)	.28	-22°	0°	4°d	20-1450-0010	20-1350-0010	20-2450-0010	20-2350-0010
L 5/Hk*(Exp. M)	.28	-22°	0°	4°d	20-145D-0010	20-135D-0010	20-245D-0010	20-235D-0010

*The ceramic material being much harder than enamel, we recommend using EXPERIENCE Metal brackets on mandibular bicuspids (L4, L5).

EXPERIENCE

Experience Ceramic Roth Type .020" x .028"

It features an original slot size on upper and lower incisors: .020 X .028. In association with .020 X .025 stainless steel archwires, the system controls the anterior torque and brings more rigidity to the buccal segments during space closure.

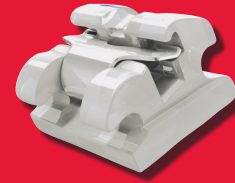
Maxillary

Tooth	I/O mm	Torque (°)	Angulation (°)	Rotation (°)	P/N	
					R	L
U 1 .020" x .028"	.81	12°	5°	0°	10-5110-0010	10-5210-0010
U 2 .020" x .028"	1.07	8°	9°	0°	10-5120-0010	10-5220-0010
U 3 .022" x .028"/Hk	.46	0°	8°	2°m	10-213U-0030	10-223U-0030
U 4/5 .022" x .028"	.46	-7°	0°	2°d	10-2140-0010	10-2240-0010
U 4/5 .022" x .028"/Hk	.46	-7°	0°	2°d	10-214U-0010	10-224U-0010

Mandibular

Tooth	I/O mm	Torque (°)	Angulation (°)	Rotation (°)	P/N	
					R	L
L 1/2 .020" x .028"	1.17	0°	2°	0°	10-5410-0010	10-5310-0010
L 3 .022" x .028"/Hk	.56	-3°	7°	2°m	10-243U-0030	10-233U-0030
L 4* .022" x .028"/Hk/(Exp. M)	.38	-17°	0°	4°d	20-244D-0010	20-234D-0010
L 5* .022" x .028"/Hk/(Exp. M)	.28	-22°	0°	4°d	20-245D-0010	20-235D-0010

*The ceramic material being much harder than enamel, we recommend using EXPERIENCE Metal brackets on mandibular bicuspids (L4, L5).



Experience Ceramic Extra Torque

This prescription is based upon the use of undersized archwires, thanks to a higher torque on the maxillary incisors. Higher buccal root-torque on the upper bicuspids prevents any interference with lingual cusps.

Maxillary

					P/N			
Tooth	I/O mm	Torque (°)	Angulation (°)	Rotation (°)	.018"		.022"	
					R	L	R	L
U 1	.81	18°	5°	0°	10-1110-0030	10-1210-0030	10-2110-0030	10-2210-0030
U 2	1.07	10°	8°	0°	10-1120-0030	10-1220-0030	10-2120-0030	10-2220-0030
U 3	.46	0°	8°	2°m	10-1130-0030	10-1230-0030	10-2130-0030	10-2230-0030
U 3/Hk	.46	0°	8°	2°m	10-113U-0030	10-123U-0030	10-213U-0030	10-223U-0030
U 4-5	.46	-10°	4°	2°d	10-1140-0030	10-1240-0030	10-2140-0030	10-2240-0030
U 4-5/Hk	.46	-10°	4°	2°d	10-114U-0030	10-124U-0030	10-214U-0030	10-224U-0030

Mandibular

					P/N			
Tooth	I/O mm	Torque (°)	Angulation (°)	Rotation (°)	.018"		.022"	
					R	L	R	L
L 1-2	1.17	1°	0°	0°	10-1610-0030	10-1610-0030	10-2610-0030	10-2610-0030
L 3	.56	-3°	7°	2°m	10-1430-0030	10-1330-0030	10-2430-0030	10-2330-0030
L 3/Hk	.56	-3°	7°	2°m	10-143U-0030	10-133U-0030	10-243U-0030	10-233U-0030
L 4*/(Exp. M)	.33	-7°	0°	2°d	20-1440-0030	20-1340-0030	20-2440-0030	20-2340-0030
L 4*/Hk/(Exp. M)	.33	-7°	0°	2°d	20-144D-0030	20-134D-0030	20-244D-0030	20-234D-0030
L 5*/(Exp. M)	.33	-7°	0°	2°d	20-1450-0030	20-1350-0030	20-2450-0030	20-2350-0030
L 5*/Hk/(Exp. M)	.33	-7°	0°	2°d	20-145D-0030	20-135D-0030	20-245D-0030	20-235D-0030

*The ceramic material being much harder than enamel, we recommend using EXPERIENCE Metal brackets on mandibular bicuspids (L4, L5).

EXPERIENCE

Experience Ceramic MBT*

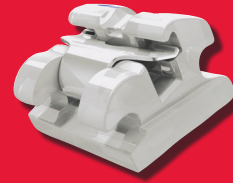
Maxillary

					P/N			
Tooth	I/O mm	Torque (°)	Angulation (°)	Rotation (°)	.018"		.022"	
					R	L	R	L
U 1	.81	17°	4°	0°	10-1110-0020	10-1210-0020	10-2110-0020	10-2210-0020
U 2	1.07	10°	8°	0°	10-1120-0020	10-1220-0020	10-2120-0020	10-2220-0020
U 3/Hk	.46	-7°	8°	0°	10-113U-0020	10-123U-0020	10-213U-0020	10-223U-0020
U 3/Hk	.46	0°	8°	0°	10-113U-0021	10-123U-0021	10-213U-0021	10-223U-0021
U 4	.46	-7°	0°	0°	10-1540-0020	10-1540-0020	10-2540-0020	10-2540-0020
U 4/Hk	.46	-7°	0°	0°	10-154U-0020	10-154U-0020	10-254U-0020	10-254U-0020
U 5	.46	-7°	0°	0°	10-1550-0020	10-1550-0020	10-2550-0020	10-2550-0020
U 5/Hk	.46	-7°	0°	0°	10-155U-0020	10-155U-0020	10-255U-0020	10-255U-0020

Mandibular

					P/N			
Tooth	I/O mm	Torque (°)	Angulation (°)	Rotation (°)	.018"		.022"	
					R	L	R	L
L 1-2	1.17	-6°	0°	0°	10-1610-0020	10-1610-0020	10-2610-0020	10-2610-0020
L 3/Hk	.56	-6°	3°	0°	10-143U-0020	10-133U-0020	10-243U-0020	10-233U-0020
L 3/Hk	.56	0°	3°	0°	10-143U-0021	10-133U-0021	10-243U-0021	10-233U-0021
L 4*/(Exp. M)	.33	-12°	2°	0°	20-1440-0020	20-1340-0020	20-2440-0020	20-2340-0020
L 4*/Hk/(Exp. M)	.33	-12°	2°	0°	20-144D-0020	20-134D-0020	20-244D-0020	20-234D-0020
L 5*/(Exp. M)	.33	-17°	2°	0°	20-1450-0020	20-1350-0020	20-2450-0020	20-2350-0020
L 5*/Hk/(Exp. M)	.33	-17°	2°	0°	20-145D-0020	20-135D-0020	20-245D-0020	20-235D-0020

*The ceramic material being much harder than enamel, we recommend using EXPERIENCE Metal brackets on mandibular bicuspids (L4, L5).



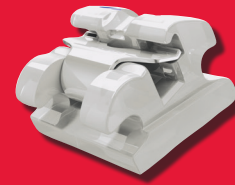
Kits Experience Ceramic

Prescription	Upper arch	Lower arch	Hook on	P/N	
				.020" x .028"	
Roth Type .020" x .028"	5-5	3-3	3	10-5CE3-0010	
Roth Type .020" x .028"	5-5	—	3	10-5C03-0010	

Prescription	Upper arch	Lower arch	Hook on	P/N	
				.018"	.022"
MBT*	3-3	—	3	10-1E03-0020	10-2E03-0020
MBT*	3-3	3-3	3	10-1EE3-0020	10-2EE3-0020
MBT*	5-5	—	3	10-1C03-0020	10-2C03-0020
MBT*	5-5	—	3,4,5	10-1C05-0020	10-2C05-0020
MBT*	5-5	3-3	3	10-1CE3-0020	10-2CE3-0020
MBT*	5-5	3-3	3,4,5	10-1CE5-0020	10-2CE5-0020

Prescription	Upper arch	Lower arch	Hook on	P/N	
				.018"	.022"
Roth Type	3-3	—	—	10-1E00-0010	10-2E00-0010
Roth Type	3-3	—	3	10-1E03-0010	10-2E03-0010
Roth Type	3-3	3-3	—	10-1EE0-0010	10-2EE0-0010
Roth Type	3-3	3-3	3	10-1EE3-0010	10-2EE3-0010
Roth Type	5-5	—	—	10-1C00-0010	10-2C00-0010
Roth Type	5-5	—	3	10-1C03-0010	10-2C03-0010
Roth Type	5-5	—	3,4,5	10-1C05-0010	10-2C05-0010
Roth Type	5-5	3-3	—	10-1CE0-0010	10-2CE0-0010
Roth Type	5-5	3-3	3	10-1CE3-0010	10-2CE3-0010
Roth Type	5-5	3-3	3,4,5	10-1CE5-0010	10-2CE5-0010

EXPERIENCE



Prescription	Upper arch	Lower arch	Hook on	P/N	
				.018"	.022"
Extra Torque	3-3	—	3	10-1E03-0030	10-2E03-0030
Extra Torque	3-3	3-3	3	10-1EE3-0030	10-2EE3-0030
Extra Torque	5-5	—	3	10-1C03-0030	10-2C03-0030
Extra Torque	5-5	—	3,4,5	10-1C05-0030	10-2C05-0030
Extra Torque	5-5	3-3	3	10-1CE3-0030	10-2CE3-0030
Extra Torque	5-5	3-3	3,4,5	10-1CE5-0030	10-2CE5-0030

Instruments

Instruments for handling Experience Ceramic brackets



C-tool features a double forked end to make the insertion of the wire easier and a hollow sphere on the other end to safely open the bracket from its gingival edge.

P/N. 50-1030-0000



Open tool is for opening Experience brackets either from the buccal face (hook side) or from the gingival edge (safety) using the hollow sphere.

P/N. 50-0030-0000

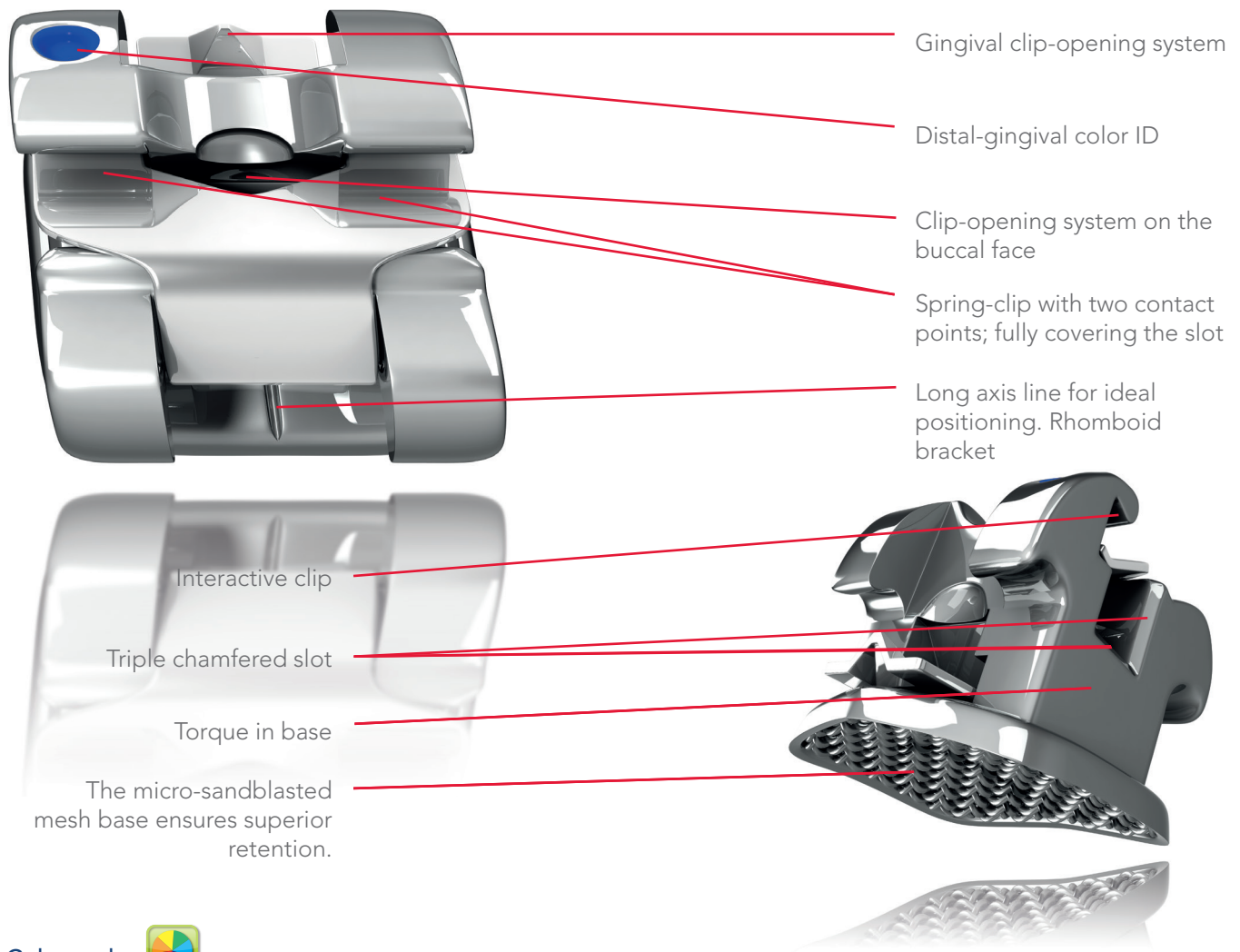




Experience Metal

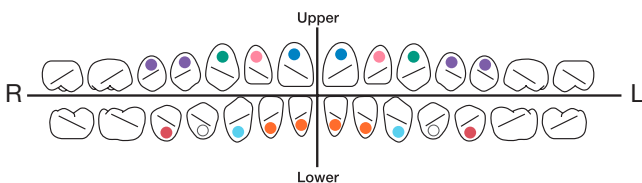
SL Product

Sliding and control made Experience Metal efficient in all steps of treatments.



Color codes

The distal-gingival color code allows an identification of the bracket to prevent bonding errors. For some prescriptions, these color codes may be different on the bicuspid.



EXPERIENCE

Experience Metal Roth Type

Maxillary

					P/N			
Tooth	I/O mm	Torque (°)	Angulation (°)	Rotation (°)	.018"		.022"	
					R	L	R	L
U 1	.81	12°	5°	0°	20-1110-0010	20-1210-0010	20-2110-0010	20-2210-0010
U 2	1.07	8°	9°	0°	20-1120-0010	20-1220-0010	20-2120-0010	20-2220-0010
U 2/Hk	1.07	8°	9°	0°	20-112D-0010	20-122D-0010	20-212D-0010	20-222D-0010
U 3	.46	-2°	13°	4°m	20-1130-0010	20-1230-0010	20-2130-0010	20-2230-0010
U 3/Hk	.46	-2°	13°	4°m	20-113D-0010	20-123D-0010	20-213D-0010	20-223D-0010
U 4-5	.46	-7°	0°	2°d	20-1140-0010	20-1240-0010	20-2140-0010	20-2240-0010
U 4-5/Hk d.	.46	-7°	0°	2°d	20-114D-0010	20-124D-0010	20-214D-0010	20-224D-0010
U 4-5/Hk m.	.46	-7°	0°	2°d	20-114M-0010	20-124M-0010	20-214M-0010	20-224M-0010

Mandibular

					P/N			
Tooth	I/O mm	Torque (°)	Angulation (°)	Rotation (°)	.018"		.022"	
					R	L	R	L
L 1-2	1.17	0°	2°	0°	20-1410-0010	20-1310-0010	20-2410-0010	20-2310-0010
L 2/Hk	1.17	0°	2°	0°	20-141D-0010	20-131D-0010	20-241D-0010	20-231D-0010
L 3	.56	-11°	7°	2°m	20-1430-0010	20-1330-0010	20-2430-0010	20-2330-0010
L 3/Hk	.56	-11°	7°	2°m	20-143D-0010	20-133D-0010	20-243D-0010	20-233D-0010
L 4	.38	-17°	0°	4°d	20-1440-0010	20-1340-0010	20-2440-0010	20-2340-0010
L 4/Hk	.38	-17°	0°	4°d	20-144D-0010	20-134D-0010	20-244D-0010	20-234D-0010
L 5	.28	-22°	0°	4°d	20-1450-0010	20-1350-0010	20-2450-0010	20-2350-0010
L 5/Hk	.28	-22°	0°	4°d	20-145D-0010	20-135D-0010	20-245D-0010	20-235D-0010



Experience Metal Roth Type .020" x .028"

It features an original slot size on upper and lower incisors: .020 X .028. In association with .020 X .025 stainless steel archwires, the system controls the anterior torque and brings more rigidity to the buccal segments during space closure.

Maxillary

Tooth	I/O mm	Torque (°)	Angulation (°)	Rotation (°)	P/N	
					R	L
U 1 .020"x.028"	.81	12°	5°	0°	20-5110-0010	20-5210-0010
U 2 .020"x.028"	1.07	8°	9°	0°	20-5120-0010	20-5220-0010
U 3 Hk .022"x.028"	.46	0°	8°	2°m	20-213D-0030	20-223D-0030
U 4/5 .022"x.028"	.46	-7°	0°	2°d	20-2140-0010	20-2240-0010
U 4/5 Hk .022"x.028"	.46	-7°	0°	2°d	20-214D-0010	20-224D-0010

Mandibular

Tooth	I/O mm	Torque (°)	Angulation (°)	Rotation (°)	P/N	
					R	L
L 1/2 .020"x.028"	1.17	0°	2°	0°	20-5410-0010	20-5310-0010
L 3 .022"x.028"	.56	-3°	7°	2°m	20-243D-0030	20-233D-0030
L 4 Hk .022"x.028"	.38	-17°	0°	4°d	20-244D-0010	20-234D-0010
L 5 Hk .022"x.028"	.28	-22°	0°	4°d	20-245D-0010	20-235D-0010



EXPERIENCE

Experience Metal Extra Torque

This prescription is based upon the use of undersized archwires, thanks to a higher torque on the maxillary incisors. Higher buccal root-torque on upper bicuspids prevents any interference with lingual cusps.

Maxillary

					P/N			
Tooth	I/O mm	Torque (°)	Angulation (°)	Rotation (°)	.018"		.022"	
					R	L	R	L
U 1	.81	18°	5°	0°	20-1110-0030	20-1210-0030	20-2110-0030	20-2210-0030
U 2	1.07	10°	8°	0°	20-1120-0030	20-1220-0030	20-2120-0030	20-2220-0030
U 2/Hk	1.07	10°	8°	0°	20-112D-0030	20-122D-0030	20-212D-0030	20-222D-0030
U 3	.46	0°	8°	2°m	20-1130-0030	20-1230-0030	20-2130-0030	20-2230-0030
U 3/Hk	.46	0°	8°	2°m	20-113D-0030	20-123D-0030	20-213D-0030	20-223D-0030
U 4-5	.46	-10°	4°	2°d	20-1140-0030	20-1240-0030	20-2140-0030	20-2240-0030
U 4-5/Hk	.46	-10°	4°	2°d	20-114M-0030	20-124M-0030	20-214M-0030	20-224M-0030

Mandibular

					P/N			
Tooth	I/O mm	Torque (°)	Angulation (°)	Rotation (°)	.018"		.022"	
					R	L	R	L
L 1-2	1.17	1°	0°	0°	20-1610-0030	20-1610-0030	20-2610-0030	20-2610-0030
L 3	.56	-3°	7°	2°m	20-1430-0030	20-1330-0030	20-2430-0030	20-2330-0030
L 3/Hk	.56	-3°	7°	2°m	20-143D-0030	20-133D-0030	20-243D-0030	20-233D-0030
L 4/5	.33	-7°	0°	2°d	20-1440-0030	20-1340-0030	20-2440-0030	20-2340-0030
L 4/5/Hk	.33	-7°	0°	2°d	20-144D-0030	20-134D-0030	20-244D-0030	20-234D-0030



Experience Metal MBT*

Maxillary

					P/N			
Tooth	I/O mm	Torque (°)	Angulation (°)	Rotation (°)	.018"		.022"	
					R	L	R	L
U 1	.81	17°	4°	0°	20-1110-0020	20-1210-0020	20-2110-0020	20-2210-0020
U 2	1.07	10°	8°	0°	20-1120-0020	20-1220-0020	20-2120-0020	20-2220-0020
U 3	.46	-7°	8°	0°	20-1130-0020	20-1230-0020	20-2130-0020	20-2230-0020
U 3/Hk	.46	-7°	8°	0°	20-113D-0020	20-123D-0020	20-213D-0020	20-223D-0020
U 3/Hk	.46	0°	8°	0°	20-113D-0021	20-123D-0021	20-213D-0021	20-223D-0021
U 4	.46	-7°	0°	0°	20-1540-0020	20-1540-0020	20-2540-0020	20-2540-0020
U 4/Hk	.46	-7°	0°	0°	20-114D-0020	20-124D-0020	20-214D-0020	20-224D-0020
U 5	.46	-7°	0°	0°	20-1550-0020	20-1550-0020	20-2550-0020	20-2550-0020
U 5/Hk	.46	-7°	0°	0°	20-115D00-20	20-125D00-20	20-215D00-20	20-225D00-20

Mandibular

					P/N			
Tooth	I/O mm	Torque (°)	Angulation (°)	Rotation (°)	.018"		.022"	
					R	L	R	L
L 1-2	1.17	-6°	0°	0°	20-1610-0020	20-1610-0020	20-2610-0020	20-2610-0020
L 3	.56	-6°	3°	0°	20-1430-0020	20-1330-0020	20-2430-0020	20-2330-0020
L 3/Hk	.56	-6°	3°	0°	20-143D-0020	20-133D-0020	20-243D-0020	20-233D-0020
L 3/Hk	.56	0°	3°	0°	20-143D-0021	20-133D-0021	20-243D-0021	20-233D-0021
L 4	.33	-12°	2°	0°	20-1440-0020	20-1340-0020	20-2440-0020	20-2340-0020
L 4/Hk	.33	-12°	2°	0°	20-144D-0020	20-134D-0020	20-244D-0020	20-234D-0020
L 5	.33	-17°	2°	0°	20-1450-0020	20-1350-0020	20-2450-0020	20-2350-0020
L 5/Hk	.33	-17°	2°	0°	20-145D-0020	20-135D-0020	20-245D-0020	20-235D-0020



Kits Experience Metal

Kit EXPERIENCE Metal TGO (Brackets only)	Upper arch	Lower arch	Hook on	P/N	
				.020" x .028"	
Roth Type .020" x .028"	5-5	5-5	3,4,5	20-5CC5-0010	

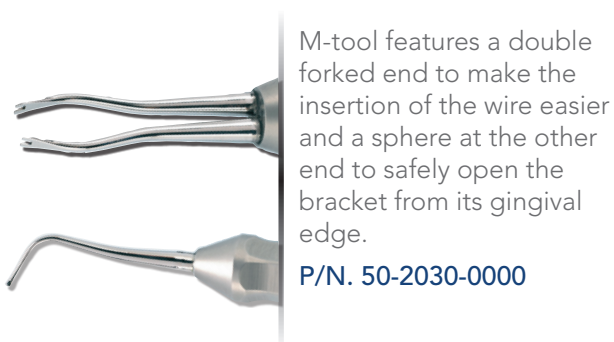
Prescription	Upper arch	Lower arch	Hook on	P/N	
				.018"	.022"
Roth Type	5-5	5-5	—	20-1CC0-0010	20-2CC0-0010
Roth Type	5-5	5-5	3	20-1CC3-0010	20-2CC3-0010
Roth Type	5-5	5-5	3,4,5	20-1CC5-0010	20-2CC5-0010

Prescription	Upper arch	Lower arch	Hook on	P/N	
				.018"	.022"
Extra Torque	5-5	5-5	—	20-1CC0-0030	20-2CC0-0030
Extra Torque	5-5	5-5	3	20-1CC3-0030	20-2CC3-0030
Extra Torque	5-5	5-5	3,4,5	20-1CC5-0030	20-2CC5-0030

Prescription	Upper arch	Lower arch	Hook on	P/N	
				.018"	.022"
MBT*	5-5	5-5	—	20-1CC0-0020	20-2CC0-0020
MBT*	5-5	5-5	3	20-1CC3-0020	20-2CC3-0020
MBT*	5-5	5-5	3,4,5	20-1CC5-0020	20-2CC5-0020

Instruments:

Instruments for handling Experience Metal brackets

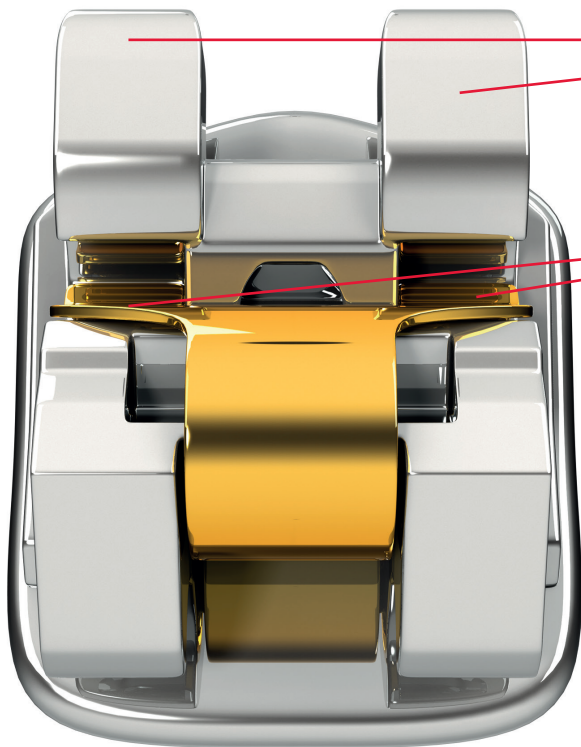




Experience L

SL Product

Experience L is THE lingual interactive orthodontic bracket. Its easy-access golden clip makes archwire changes more practitioner-accessible and shortens treatment time to the greatest satisfaction of patients. Its small size limits speech problems and bond failures.

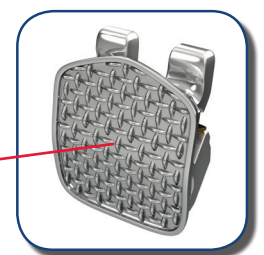


Rounded and polished tie wings to prevent occlusal interferences

Golden spring-clip for better visibility. Two contact points. Full slot coverage



Cuspid bracket with hook

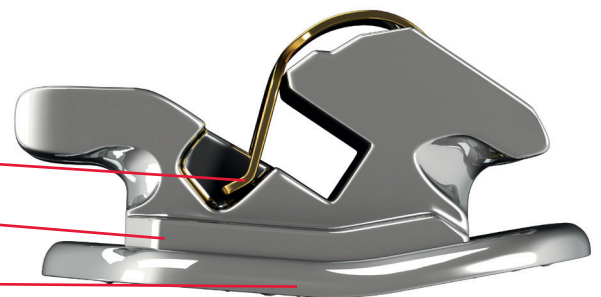


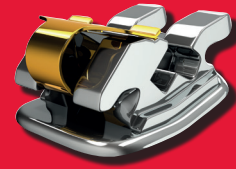
The micro sandblasted base ensures superior retention.

Interactive clip

Low profile for greater comfort

Anatomical base





Experience L

Maxillary

				P/N	
Tooth	Torque (°)	Angulation (°)	Rotation (°)	.018"	
				R	L
U 1-2	60°	0°	0°	16-1510-0010	16-1510-0010
U 3	60°	0°	0°	16-1530-0010	16-1530-0010
U 3/Hk	60°	0°	0°	16-153U-0010	16-153U-0010
U 4-5	10°	0°	0°	16-1740-0010	16-1740-0010
U 4-5/Hk	10°	0°	0°	16-174U-0010	16-174U-0010
U 6-7/Hk	10°	0°	0°	16-116M-0010	16-126M-0010

Mandibular

				P/N	
Tooth	Torque (°)	Angulation (°)	Rotation (°)	.018"	
				R	L
L 1-2	50°	0°	0°	16-1610-0010	16-1610-0010
L 3	50°	0°	0°	16-1630-0010	16-1630-0010
L 3/Hk	50°	0°	0°	16-163U-0010	16-163U-0010
L 4-5	10°	0°	0°	16-1740-0010	16-1740-0010
L 4-5/Hk	10°	0°	0°	16-174U-0010	16-174U-0010
L 6-7/Hk	0°	0°	0°	16-146M-0010	16-136M-0010

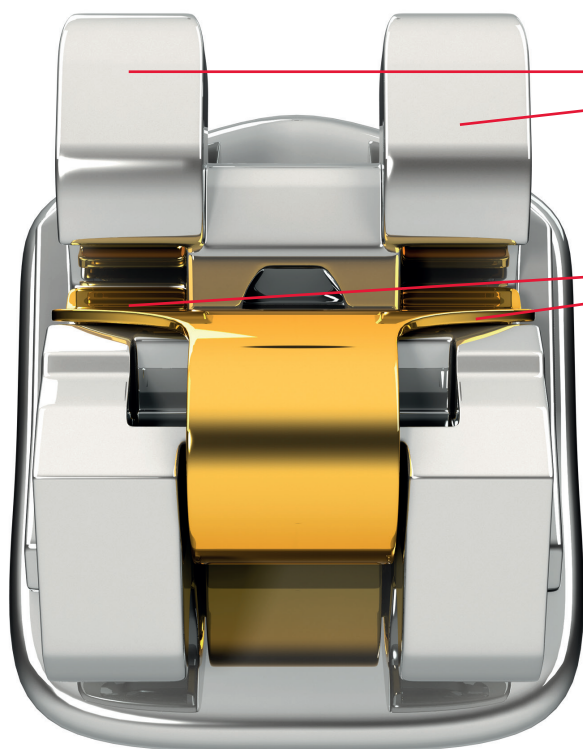
		P/N
EXPERIENCE L Kits (Brackets Only)		.018"
U 7-7		16-1A00-0010
U/L 7-7		16-1AA0-0010



EXPERIENCE LSB (Small Base)

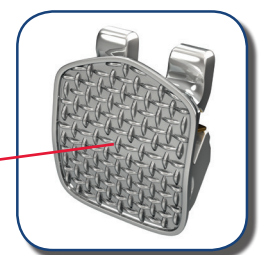
SL Product

A lingual bracket similar to Experience L, with a smaller base. It is the tool of choice for aesthetic corrections in the anterior segment. Invisible, it meets the requirements of an adult patienthood for cosmetic indications. It can be bonded directly on the lingual surfaces of the teeth or with a transfer tray.



Rounded and polished tie wings to prevent occlusal interferences

Golden spring-clip for better visibility. Two contact points. Full slot coverage.

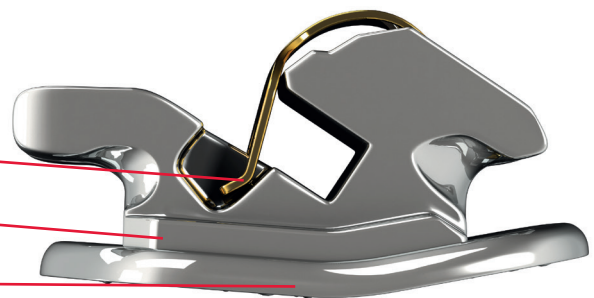


The micro sandblasted base ensures superior retention.

Interactive clip

Low profile for greater comfort

Anatomical base



EXPERIENCE LSB



EXPERIENCE LSB

Maxillary

				P/N	
				.018"	
Tooth	Torque (°)	Angulation (°)	Rotation (°)	R	L
U 1-2-3	60°	0°	0°	17-1510-0010	17-1510-0010
U 3/Hk	60°	0°	0°	17-153U-0010	17-153U-0010

Mandibular

				P/N	
				.018"	
Tooth	Torque (°)	Angulation (°)	Rotation (°)	R	L
L 1-2-3	50°	0°	0°	17-1610-0010	17-1610-0010
L 1-2-3/Narrow base	50°	0°	0°	17-1610-0050	17-1610-0050
L 3/Hk	50°	0°	0°	17-163U-0010	17-163U-0010

		P/N
		.018"
Kit EXPERIENCE LSB U 3-3		17-1EE0-0010
Kit EXPERIENCE LSB L 3-3		17-10E0-0010
Kit EXPERIENCE LSB U/L 3-3		17-1EE0-0010

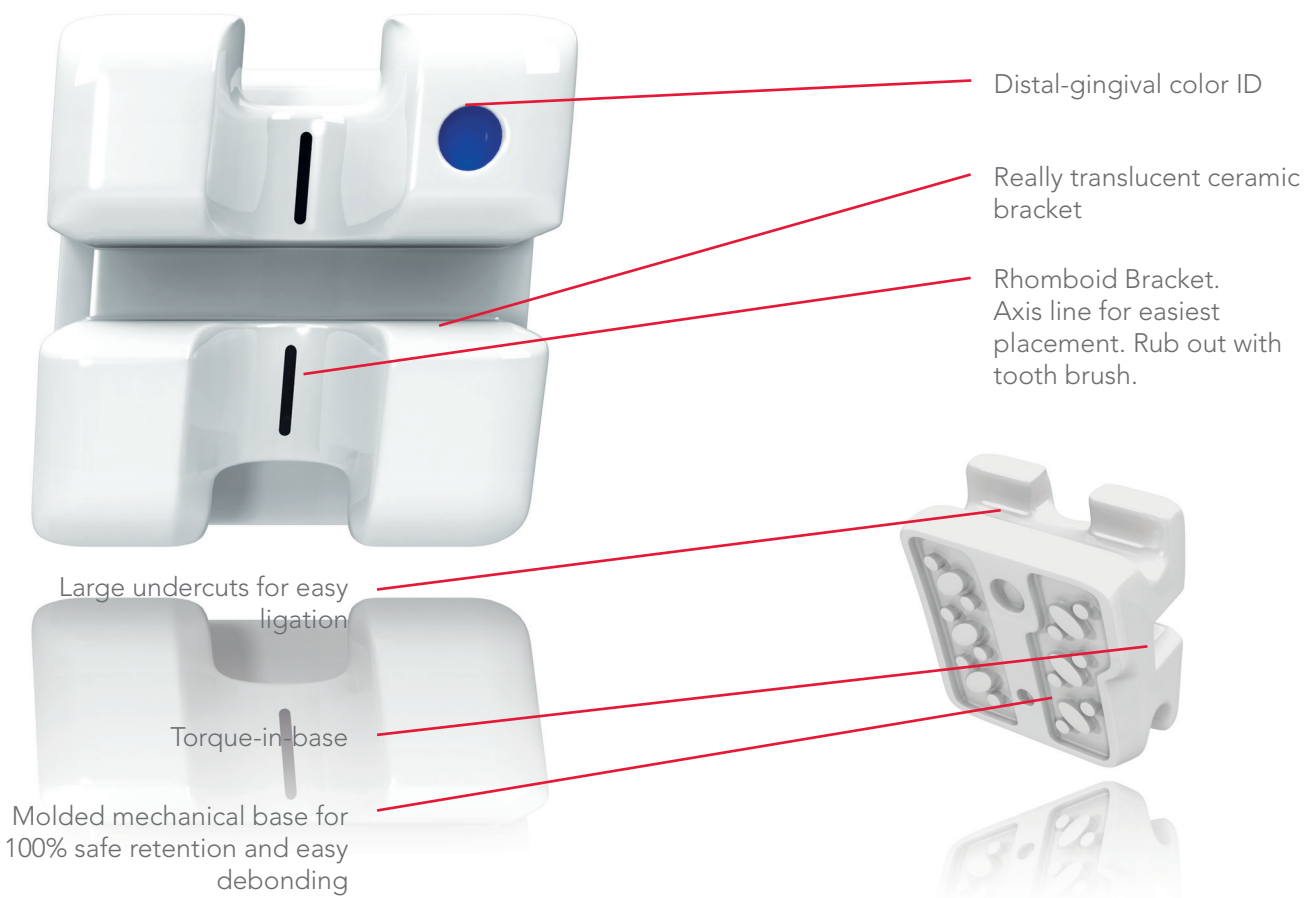




Chic.

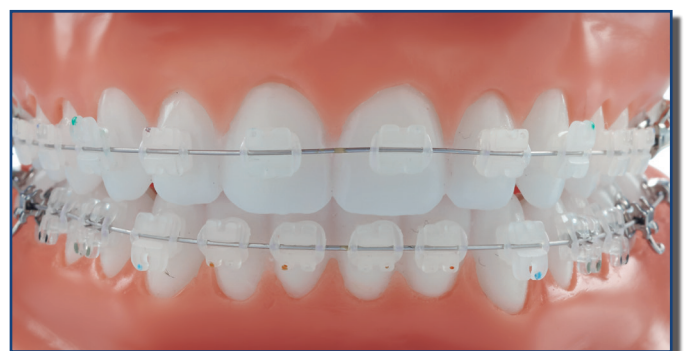
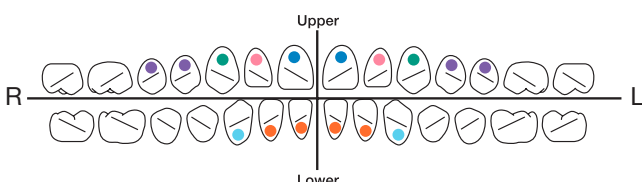
 **Aesthetic**

Chic. is a ceramic bracket made from polycrystalline alumina. The patented firing process gives this bracket an unrivalled smoothness for patients' comfort. The retention of its original base is 100% mechanical.



Color codes

The distal-gingival color code allows an identification of the bracket to prevent bonding errors.



Chic.

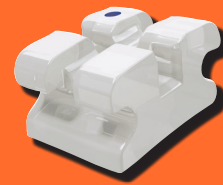
Chic.

Maxillary

			P/N			
Tooth	Torque (°)	Angulation (°)	.018"		.022"	
			R	L	R	L
U 1	12°	5°	14-1110-0010	14-1210-0010	14-2110-0010	14-2210-0010
U 2	8°	9°	14-1120-0010	14-1220-0010	14-2120-0010	14-2220-0010
U 3	-2°	13°	14-1130-0010	14-1230-0010	14-2130-0010	14-2230-0010
U 3/Hk	-2°	13°	14-113D-0010	14-123D-0010	14-213D-0010	14-223D-0010
U 4-5	-7°	0°	14-1540-0010	14-1540-0010	14-2540-0010	14-2540-0010

Mandibular

			P/N			
Tooth	Torque (°)	Angulation (°)	.018"		.022"	
			R	L	R	L
L 1-2	0°	0°	14-1610-0010	14-1610-0010	14-2610-0010	14-2610-0010
L 3	-11°	7°	14-1430-0010	14-1330-0010	14-2430-0010	14-2330-0010
L 3/Hk	-11	7°	14-143D-0010	14-133D-0010	14-243D-0010	14-233D-0010



Chic. MBT*

Maxillary

			P/N	
Tooth	Torque (°)	Angulation (°)	.022"	
			R	L
U 1	17°	4°	14-2110-0020	14-2210-0020
U 2	10°	8°	14-2120-0020	14-2220-0020
U 3/Hk	-7°	8°	14-213U-0020	14-223U-0020
U 4	-7°	0°	14-2540-0020	14-2540-0020
U 5	-7°	0°	14-2550-0020	14-2550-0020

Mandibular

			P/N	
Tooth	Torque (°)	Angulation (°)	.022"	
			R	L
L 1-2	-6°	0°	14-2610-0020	14-2610-0020
L 3/Hk	-6°	3°	14-243U-0020	14-233U-0020

Kits Chic.

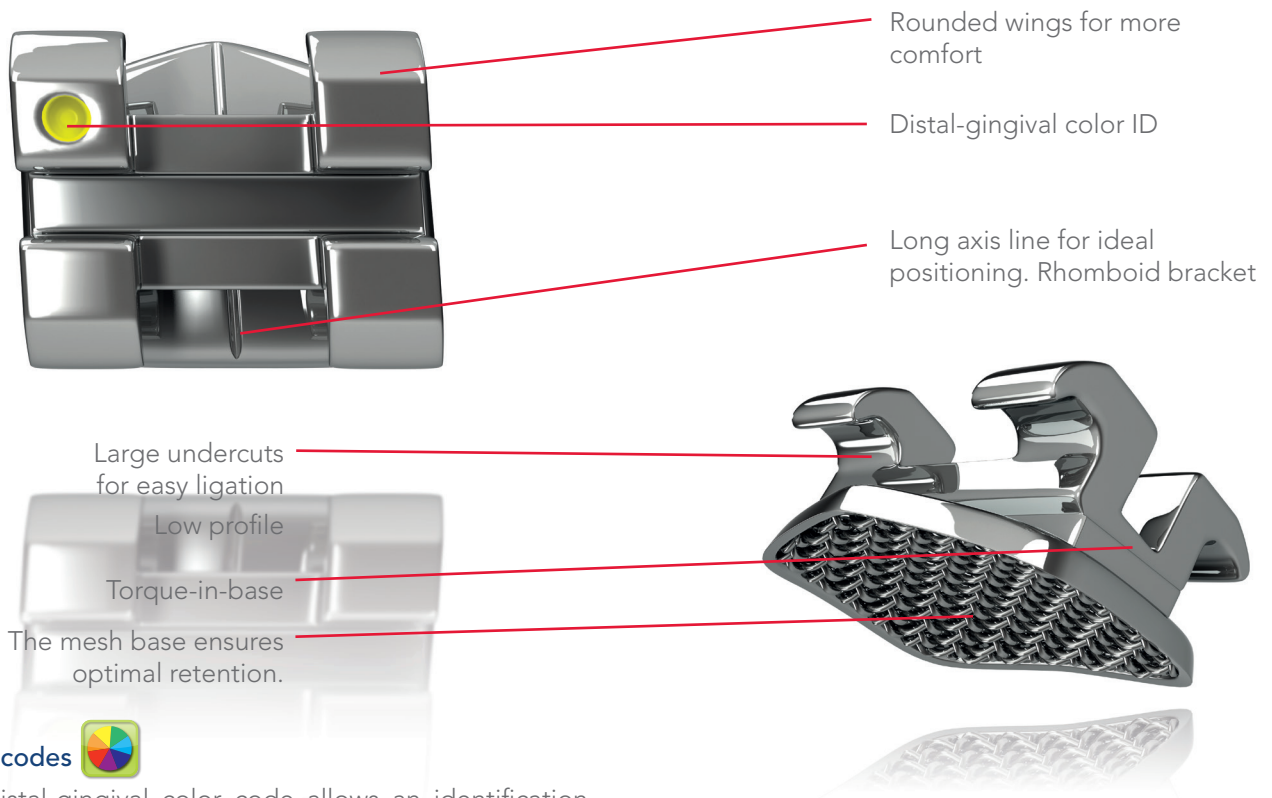
Prescription	Upper arch	Lower arch	Hook on	P/N	
				.018"	.022"
Roth Type	5-5	3-3	3	14-1CE3-0010	14-2CE3-0010
MBT Type	5-5	3-3	3	—	14-2CE3-0020

LEGEND

LEGEND Mini / LEGEND Medium

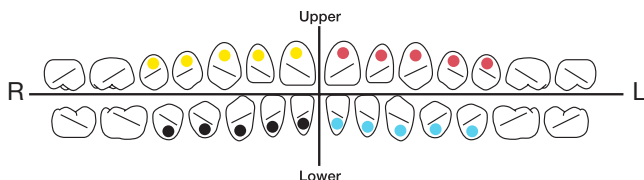
Probably the most sophisticated standard bracket on the orthodontic market place:

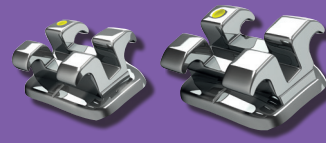
- Information: In/out-Torque-Angulation-Offset
- Chamfered slot entry for easier insertion of heavy archwires
- Anatomical sandblasted bases for each tooth, specially widened on bicuspids
- Torque-in-base
- Low profile
- Rhomboid



Color codes

The distal-gingival color code allows an identification of the bracket to prevent bonding errors. For some prescriptions, these color codes may be different on the bicuspids.





LEGEND Mini Roth Type

Maxillary

					P/N			
Tooth	I/O mm	Torque (°)	Angulation (°)	Rotation (°)	.018"		.022"	
					R	L	R	L
U 1	.25	12°	5°	0°	31-1110-0010	31-1210-0010	31-2110-0010	31-2210-0010
U 2	.78	8°	9°	0°	31-1120-0010	31-1220-0010	31-2120-0010	31-2220-0010
U 2/Hk	.78	8°	9°	0°	31-112D-0010	31-122D-0010	31-212D-0010	31-222D-0010
U 3	.25	2°	10°	4°m	31-1130-0010	31-1230-0010	31-2130-0010	31-2230-0010
U 3/Hk	.25	2°	10°	4°m	31-113D-0010	31-123D-0010	31-213D-0010	31-223D-0010
U 4	.37	-7°	0°	2°d	31-1140-0010	31-1240-0010	31-2140-0010	31-2240-0010
U 4/Hk	.37	-7°	0°	2°d	31-114M-0010	31-124M-0010	31-214M-0010	31-224M-0010
U 4/Hk, Off. Base	.37	-7°	0°	0°	—	—	31-214M-0013	31-224M-0013
U 4-5/Off. Base	.37	-7°	0°	0°	31-1540-0013	31-1540-0013	31-2540-0013	31-2540-0013
U 5	.48	-7°	0°	2°d	31-1150-0010	31-1250-0010	31-2150-0010	31-2250-0010
U 5/Hk	.48	-7°	0°	2°d	31-115M-0010	31-125M-0010	31-215M-0010	31-225M-0010

Mandibular

					P/N			
Tooth	I/O mm	Torque (°)	Angulation (°)	Rotation (°)	.018"		.022"	
					R	L	R	L
L 1-2	.97	-1°	0°	0°	31-1610-0010	31-1610-0010	31-2610-0010	31-2610-0010
L 3	.25	-11°	7°	2°m	31-1430-0010	31-1330-0010	31-2430-0010	31-2330-0010
L 3/Hk	.25	-11°	7°	2°m	31-143D-0010	31-133D-0010	31-243D-0010	31-233D-0010
L 4	.28	-17°	0°	4°d	31-1440-0010	31-1340-0010	31-2440-0010	31-2340-0010
L 4/Off. Base	.28	-17°	0°	0°	31-1640-0013	31-1640-0013	31-2640-0013	31-2640-0013
L 4/Hk	.28	-17°	0°	4°d	31-144D-0010	31-134D-0010	31-244D-0010	31-234D-0010
L 4/Hk, Off. Base	.28	-17°	0°	0°	31-144D-0013	31-134D-0013	31-244D-0013	31-234D-0013
L 5	.33	-22°	0°	4°d	31-1450-0010	31-1350-0010	31-2450-0010	31-2350-0010
L 5/Off. Base	.33	-22°	0°	0°	31-1650-0013	31-1650-0013	31-2650-0013	31-2650-0013
L 5/Hk	.33	-22°	0°	4°d	31-145D-0010	31-135D-0010	31-245D-0010	31-235D-0010
L 5/Hk, Off. Base	.33	-22°	0°	0°	31-145D-0013	31-135D-0013	31-245D-0013	31-235D-0013

LEGEND

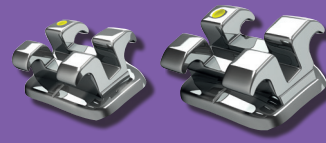
LEGEND Mini MBT*

Maxillary

				P/N			
Tooth	I/O mm	Torque (°)	Angulation (°)	.018"		.022"	
				R	L	R	L
U 1	.25	17°	4°	31-1110-0020	31-1110-0020	31-2110-0020	31-2210-0020
U 2	.78	8°	9°	31-1120-0020	31-1220-0020	31-2120-0020	31-2220-0020
U 3	.25	-7°	8°	31-1130-0020	31-1230-0020	31-2130-0020	31-2230-0020
U 3/Hk	.25	-7°	8°	31-113D-0020	31-123D-0020	31-213D-0020	31-223D-0020
U 4	.37	-7°	0°	31-1540-0020	31-1540-0020	31-2540-0020	31-2540-0020
U 4/Hk	.37	-7°	0°	31-114D-0020	31-124D-0020	31-214D-0020	31-224D-0020
U 5	.48	-7°	0°	31-1550-0020	31-1550-0020	31-2550-0020	31-2550-0020
U 5/Hk	.48	-7°	0°	31-115D-0020	31-125D-0020	31-215D-0020	31-225D-0020

Mandibular

				P/N			
Tooth	I/O mm	Torque (°)	Angulation (°)	.018"		.022"	
				R	L	R	L
L 1-2	.97	-6°	0°	31-1610-0020	31-1610-0020	31-2610-0020	31-2610-0020
L 3	.25	-6°	3°	31-1430-0020	31-1330-0020	31-2430-0020	31-2330-0020
L 3/Hk	.25	-6°	3°	31-143D-0020	31-133D-0020	31-243D-0020	31-233D-0020
L 4	.28	-12°	2°	31-1440-0020	31-1340-0020	31-2440-0020	31-2340-0020
L 4/Hk	.28	-12°	2°	31-144D-0020	31-134D-0020	31-244D-0020	31-234D-0020
L 5	.33	-17°	2°	31-1450-0020	31-1350-0020	31-2450-0020	31-2350-0020
L 5/Hk	.33	-17°	2°	31-145D-0020	31-135D-0020	31-245D-0020	31-235D-0020



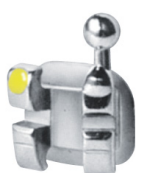
LEGEND Mini Roth Type V-Slot

Maxillary

					P/N			
Tooth	I/O mm	Torque (°)	Angulation (°)	Rotation (°)	.018"		.022"	
					R	L	R	L
U 1	.70	12°	5°	0°	31-1110-0034	31-1210-0034	31-2110-0034	31-2210-0034
U 2	.97	8°	9°	0°	31-1120-0034	31-1220-0034	31-2120-0034	31-2220-0034
U 3	.56	-2°	7°	0°	31-1130-0034	31-1230-0034	31-2130-0034	31-2230-0034
U 3/Hk	.56	-2°	7°	0°	31-113D-0034	31-123D-0034	31-213D-0034	31-223D-0034
U 4-5	.56	-7°	0°	0°	31-1540-0034	31-1540-0034	31-2540-0034	31-2540-0034
U 4-5/Off. Base	.56	-7°	0°	0°	31-1540-0035	31-1540-0035	31-2540-0035	31-2540-0035
U 4-5/Hk	.56	-7°	0°	0°	31-114M-0034	31-124M-0034	31-214M-0034	31-224M-0034

Mandibular

					P/N			
Tooth	I/O mm	Torque (°)	Angulation (°)	Rotation (°)	.018"		.022"	
					R	L	R	L
L 1-2	.97	0°	0°	0°	31-1610-0034	31-1610-0034	31-2610-0034	31-2610-0034
L 3	.56	-5°	7°	0°	31-1430-0034	31-1330-0034	31-2430-0034	31-2330-0034
L 3/Hk	.56	-5°	7°	0°	31-143D-0034	31-133D-0034	31-243D-0034	31-233D-0034
L 4	.56	-11°	0°	0°	31-1640-0034	31-1640-0034	31-2640-0034	31-2640-0034
L 4/Hk	.56	-11°	0°	0°	31-144D-0034	31-134D-0034	31-244D-0034	31-234D-0034
L 4/Off. Base	.56	-11°	0°	0°	31-1640-0035	31-1640-0035	31-2640-0035	31-2640-0035
L 4/Hk, Off. Base	.56	-11°	0°	0°	31-144D-0035	31-134D-0035	31-244D-0035	31-234D-0035
L 5	.56	-17°	0°	0°	31-1650-0034	31-1650-0034	31-2650-0034	31-2650-0034
L 5/Hk	.56	-17°	0°	0°	31-145D-0034	31-135D-0034	31-245D-0034	31-235D-0034
L 5/Off. Base	.56	-17°	0°	0°	31-1650-0035	31-1650-0035	31-2650-0035	31-2650-0035
L 5/Hk, Off. Base	.56	-17°	0°	0°	31-145D-0035	31-135D-0035	31-245D-0035	31-235D-0035



2nd Bicuspid



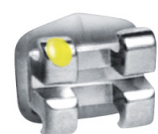
1st Bicuspid



Cuspid



Lateral



Central

LEGEND

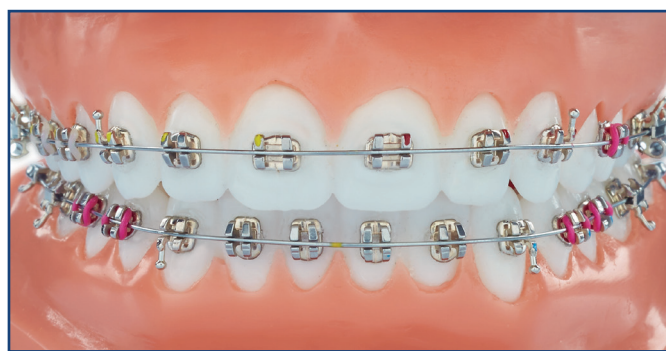
LEGEND Mini V-Slot BI

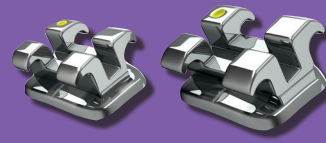
Maxillary

Tooth	I/O mm	Torque (°)	Angulation (°)	Rotation (°)	P/N			
					.018"		.022"	
					R	L	R	L
U 1	.70	12°	5°	0°	31-1110-0034	31-1210-0034	—	—
U 2	.97	8°	9°	0°	31-1120-0034	31-1220-0034	—	—
U 3	.56	0°	7°	0°	—	—	31-2130-0040	31-2230-0040
U 3/Hk	.56	0°	7°	0°	—	—	31-213D-0040	31-223D-0040
U 4-5	.56	0°	0°	0°	—	—	31-2540-0040	31-2540-0040
U 4-5/Hk	.56	0°	0°	0°	—	—	31-215M-0040	31-225M-0040

Mandibular

Tooth	I/O mm	Torque (°)	Angulation (°)	Rotation (°)	P/N			
					.018"		.022"	
					R	L	R	L
L 1-2	.97	0°	0°	0°	31-1610-0034	31-1610-0034	—	—
L 3	.56	0°	5°	0°	—	—	31-2430-0040	31-2330-0040
L 3/Hk	.56	0°	5°	0°	—	—	31-243D-0040	31-233D-0040
L 4-5	.56	0°	0°	0°	—	—	31-2640-0040	31-2640-0040
L 4-5/Hk	.56	0°	0°	0°	—	—	31-244D-0040	31-234D-0040





LEGEND Mini BIO

Maxillary

					P/N	
Tooth	I/O mm	Torque (°)	Angulation (°)	Rotation (°)	.018"	
					R	L
U 1	.25	22°	5°	0°	31-1110-0027	31-1210-0027
U 2	.25	13°	9°	0°	31-1120-0011	31-1220-0011
U 3/Hk	.25	7°	5°	0°	31-113D-0027	31-123D-0027
U 4-5	.40	0°	0°	0°	34-1540-0025	34-1540-0025

Mandibular

					P/N	
Tooth	I/O mm	Torque (°)	Angulation (°)	Rotation (°)	.018"	
					R	L
L 1-2	.97	-1°	0°	0°	31-1610-0010	31-1610-0010
L 3/Hk	.25	7°	5°	0°	31-143D-0027	31-133D-0027
L 4-5	.40	0°	0°	0°	34-1640-0025	34-1640-0025

Optional BIO brackets

Maxillary

					P/N	
Tooth	I/O mm	Torque (°)	Angulation (°)	Rotation (°)	.018"	
					R	L
U 4	.37	-7°	0°	2°d	31-1140-0010	31-1240-0010
U 4/Hk	.37	-7°	0°	2°d	31-114M-0010	31-124M-0010
U 5	.48	-7°	0°	2°d	31-1150-0010	31-1250-0010
U 5/Hk	.48	-7°	0°	2°d	31-115M-0010	31-125M-0010

Mandibular

					P/N	
Tooth	I/O mm	Torque (°)	Angulation (°)	Rotation (°)	.018"	
					R	L
L 4	.37	-12°	2°	0°	31-1440-0020	31-1340-0020
L 4/Hk	.37	-12°	2°	0°	31-144D-0020	31-134D-0020
L 5	.48	-17°	2°	0°	31-1450-0020	31-1350-0020
L 5/Hk	.48	-17°	2°	0°	31-145D-0020	31-135D-0020

LEGEND

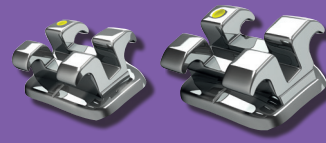
LEGEND Mini Alexander Type

Maxillary

Tooth	I/O mm	Torque (°)	Angulation (°)	P/N			
				.018"		.022"	
				R	L	R	L
U 1/twin	.25	14°	5°	31-1110-0031	31-1210-0031	31-2110-0031	31-2210-0031
U 2/twin	.78	7°	9°	31-1120-0031	31-1220-0031	31-2120-0031	31-2220-0031
U 2/Hk	.78	8°	9°	31-112D-0010	31-122D-0010	31-212D-0010	31-222D-0010
U 3/Lewis (sw)	.35	-3°	10°	31-1130-0031	31-1230-0031	31-2130-0031	31-2230-0031
U 3/Hk (sw)	.35	-3°	10°	31-113U-0031	31-123U-0031	31-213U-0031	31-223U-0031
U 4/Lewis (sw)	.37	-7°	0°	31-1540-0031	31-1540-0031	31-2540-0031	31-2540-0031
U 4/Hk (sw)	.37	-7°	0°	31-154U-0031	31-154U-0031	31-254U-0031	31-254U-0031
U 5/Lewis (sw)	.48	-7°	0°	31-1550-0031	31-1550-0031	31-2550-0031	31-2550-0031
U 5/Hk (sw)	.48	-7°	0°	31-155U-0031	31-155U-0031	31-255U-0031	31-255U-0031
U 4-5/Off. Base	.43	-7°	0°	31-1540-0032	31-1540-0032	31-2540-0032	31-2540-0032
U 4-5/Hk, Off. Base	.43	-7°	0°	31-154U-0032	31-154U-0032	31-254U-0032	31-254U-0032

Mandibular

Tooth	I/O mm	Torque (°)	Angulation (°)	P/N			
				.018"		.022"	
				R	L	R	L
L 1-2/Lewis (sw)	.97	-5°	0°	31-1610-0031	31-1610-0031	31-2610-0031	31-2610-0031
L 1-2/Hk (sw)	.97	-5°	0°	31-161U-0031	31-161U-0031	31-261U-0031	31-261U-0031
L 1-2/Hk (sw)	.97	-1°	0°	31-161U-0033	31-161U-0033	31-261U-0033	31-261U-0033
L 1-2 (sw)	.97	-5°	0°	31-1610-0024	31-1610-0024	—	—
L 1-2 (sw)	.97	-1°	0°	31-1610-0033	31-1610-0033	31-2610-0033	31-2610-0033
L 2/Hk (sw)	.97	-1°	6°	31-142U-0031	31-132U-0031	—	—
L 3/Lewis (sw)	.25	-7°	6°	31-1430-0031	31-1330-0031	31-2430-0031	31-2330-0031
L 3/Hk (sw)	.25	-7°	6°	31-143U-0031	31-133U-0031	31-243U-0031	31-233U-0031
L 3 (sw)	.25	0°	6°	31-1430-0033	31-1330-0033	—	—
L 4/Lewis (sw)	.28	-11°	0°	31-1640-0031	31-1640-0031	31-2640-0031	31-2640-0031
L 4/Off. Base	.28	-11°	0°	31-1640-0032	31-1640-0032	31-2640-0032	31-2640-0032
L 4/Hk (sw)	.28	-11°	0°	31-164U-0031	31-164U-0031	31-264U-0031	31-264U-0031
L 4/Hk/Off. Base	.28	-11°	0°	31-164U-0032	31-164U-0032	31-264U-0032	31-264U-0032
L 5/Lewis (sw)	.33	-17°	0°	31-1650-0031	31-1650-0031	31-2650-0031	31-2650-0031
L 5/Off. Base	.33	-17°	0°	31-1650-0032	31-1650-0032	31-2650-0032	31-2650-0032
L 5/Hk (sw)	.33	-17°	0°	31-165U-0031	31-165U-0031	31-265U-0031	31-265U-0031
L 5/Hk, Off. Base	.33	-17°	0°	31-165U-0032	31-165U-0032	31-265U-0032	31-265U-0032



LEGEND Mini Options

Maxillary

					P/N			
Tooth	I/O mm	Torque (°)	Angulation (°)	Rotation (°)	.018"		.022"	
					R	L	R	L
U 1	.25	17°	5°	0°	31-1110-0011	31-1210-0011	31-2110-0011	31-2210-0011
U 2	.25	13°	9°	0°	31-1120-0011	31-1220-0011	31-2120-0011	31-2220-0011
U 3/Hk	.25	0°	7°	4°m	31-113D-0011	31-123D-0011	31-213D-0011	31-223D-0011

Mandibular

					P/N			
Tooth	I/O mm	Torque (°)	Angulation (°)	Rotation (°)	.018"		.022"	
					R	L	R	L
L 1	.97	-5°	0°	0°	31-1610-0011	31-1610-0011	31-2610-0011	31-2610-0011
L 1-2	.97	-10°	0°	0°	31-1610-0037	31-1610-0037	31-2610-0037	31-2610-0037
L 4	.28	-11°	0°	0°	31-1640-0039	31-1640-0039	—	—
L 4/Hk	.28	-11°	0°	0°	—	—	31-244D-0039	31-244D-0039

LEGEND Mini Kits

Prescription	Upper arch	Lower arch	Hook on	P/N	
				.018"	.022"
Roth Type	5-5	5-5	—	31-1CC0-0010	31-2CC0-0010
Roth Type	5-5	5-5	3	31-1CC3-0010	31-2CC3-0010
Roth Type	5-5	5-5	3,4,5	31-1CC5-0010	31-2CC5-0010
MBT*	5-5	5-5	—	31-1CC0-0020	31-2CC0-0020
MBT*	5-5	5-5	3	31-1CC3-0020	31-2CC3-0020
MBT*	5-5	5-5	3,4,5	31-1CC5-0020	31-2CC5-0020

LEGEND

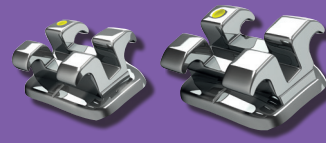
LEGEND Medium Roth Type

Maxillary

				P/N			
Tooth	I/O mm	Torque (°)	Angulation (°)	.018"		.022"	
				R	L	R	L
U 1	.25	12°	5°	32-1110-0010	32-1210-0010	32-2110-0010	32-2210-0010
U 2	.78	8°	9°	32-1120-0010	32-1220-0010	32-2120-0010	32-2220-0010
U 3	.25	2°	10°	32-1130-0010	32-1230-0010	32-2130-0010	32-2230-0010
U 3/Hk	.25	2°	10°	32-113D-0010	32-123D-0010	32-213D-0010	32-223D-0010
U 4	.37	-7°	0°	32-1540-0010	32-1540-0010	32-2540-0010	32-2540-0010
U 4/Hk	.37	-7°	0°	32-114M-0010	32-124M-0010	32-214M-0010	32-224M-0010
U 4-5/Off. Base	.37	-7°	0°	32-1540-0013	32-1540-0013	32-2540-0013	32-2540-0013
U 5	.48	-7°	0°	32-1550-0010	32-1550-0010	32-2550-0010	32-2550-0010
U 5/Hk	.48	-7°	0°	32-115M-0010	32-125M-0010	32-215M-0010	32-225M-0010

Mandibular

				P/N			
Tooth	I/O mm	Torque (°)	Angulation (°)	.018"		.022"	
				R	L	R	L
L 1-2	.97	-1°	0°	32-1610-0010	32-1610-0010	32-2610-0010	32-2610-0010
L 3	.25	-11°	7°	32-1430-0010	32-1330-0010	32-2430-0010	32-2330-0010
L 3/Hk	.25	-11°	7°	32-143D-0010	32-133D-0010	32-243D-0010	32-233D-0010
L 4	.28	-17°	0°	32-1640-0010	32-1640-0010	32-2640-0010	32-2640-0010
L 4/Hk	.28	-17°	0°	32-144D-0010	32-134D-0010	32-244D-0010	32-234D-0010
L 4/Off. Base	.28	-17°	0°	32-1640-0013	32-1640-0013	32-2640-0013	32-2640-0013
L 4/Hk, Off. Base	.28	-17°	0°	32-144D-0013	32-134D-0013	32-244D-0013	32-234D-0013
L 5	.33	-22°	0°	32-1650-0010	32-1650-0010	32-2650-0010	32-2650-0010
L 5/Hk	.33	-22°	0°	32-145D-0010	32-135D-0010	32-245D-0010	32-235D-0010
L 5/Off. Base	.33	-22°	0°	32-1640-0013	32-1640-0013	32-2640-0013	32-2640-0013
L 5/Hk, Off. Base	.33	-22°	0°	32-145D-0013	32-135D-0013	32-245D-0013	32-235D-0013



LEGEND Medium Extra Torque

Maxillary

					P/N			
Tooth	I/O mm	Torque (°)	Angulation (°)	Rotation (°)	.018"		.022"	
					R	L	R	L
U 1	.25	18°	5°	0°	32-1110-0030	32-1210-0030	32-2110-0030	32-2210-0030
U 2	.78	10°	8°	0°	32-1120-0030	32-1220-0030	32-2120-0030	32-2220-0030
U 3	.25	0°	8°	2°m	32-1130-0030	32-1230-0030	32-2130-0030	32-2230-0030
U 3/Hk	.25	0°	8°	2°m	32-113D-0030	32-123D-0030	32-213D-0030	32-223D-0030
U 4-5	.42	-10°	4°	2°d	32-1140-0030	32-1240-0030	32-2140-0030	32-2240-0030
U 4-5/Hk	.42	-10°	4°	2°d	32-114M-0030	32-124M-0030	32-214M-0030	32-224M-0030

Mandibular

					P/N			
Tooth	I/O mm	Torque (°)	Angulation (°)	Rotation (°)	.018"		.022"	
					R	L	R	L
L 1-2	.97	1°	0°	0°	32-1610-0030	32-1610-0030	32-2610-0030	32-2610-0030
L 3	.25	-3°	7°	2°m	32-1430-0030	32-1330-0030	32-2430-0030	32-2330-0030
L 3/Hk	.25	-3°	7°	2°m	32-143D-0030	32-133D-0030	32-243D-0030	32-233D-0030
L 4-5	.30	-7°	0°	2°d	32-1440-0030	32-1340-0030	32-2440-0030	32-2340-0030
L 4-5/Hk	.30	-7°	0°	2°d	32-144D-0030	32-134D-0030	32-244D-0030	32-234D-0030

LEGEND

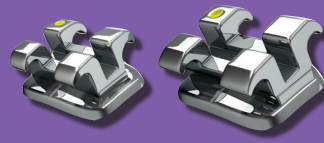
LEGEND Medium MBT*

Maxillary

				P/N			
Tooth	I/O mm	Torque (°)	Angulation (°)	.018"		.022"	
				R	L	R	L
U 1	.25	17°	4°	32-1110-0020	32-1210-0020	32-2110-0020	32-2210-0020
U 2	.78	10°	8°	32-1120-0020	32-1220-0020	32-2120-0020	32-2220-0020
U 3	.25	-7°	8°	32-1130-0020	32-1230-0020	32-2130-0020	32-2230-0020
U 3/Hk	.25	-7°	8°	32-113D-0020	32-123D-0020	32-213D-0020	32-223D-0020
U 4	.37	-7°	0°	32-1540-0020	32-1540-0020	32-2540-0020	32-2540-0020
U 4/Hk	.37	-7°	0°	32-114M-0020	32-124M-0020	32-214M-0020	32-224M-0020
U 5	.48	-7°	0°	32-1550-0020	32-1550-0020	32-2550-0020	32-2550-0020
U 5/Hk	.48	-7°	0°	32-115M-0020	32-125M-0020	32-215M-0020	32-225M-0020

Mandibular

				P/N			
Tooth	I/O mm	Torque (°)	Angulation (°)	.018"		.022"	
				R	L	R	L
L 1-2	.97	-6°	0°	32-1610-0020	32-1610-0020	32-2610-0020	32-2610-0020
L 3	.30	-6°	3°	32-1430-0020	32-1330-0020	32-2430-0020	32-2330-0020
L 3/Hk	.30	-6°	3°	32-143D-0020	32-133D-0020	32-243D-0020	32-233D-0020
L 4	.50	-12°	2°	32-1640-0020	32-1640-0020	32-2440-0020	32-2340-0020
L 4/Hk	.50	-12°	2°	32-144D-0020	32-134D-0020	32-244D-0020	32-234D-0020
L 5	.50	-17°	2°	32-1650-0020	32-1650-0020	32-2450-0020	32-2350-0020
L 5/Hk	.50	-17°	2°	32-145D-0020	32-135D-0020	32-245D-0020	32-235D-0020



LEGEND Medium BIO

Maxillary

Tooth	I/O mm	Torque (°)	Angulation (°)	P/N			
				.018"		.022"	
				R	L	R	L
U 1	.25	22°	5°	32-1110-0027	32-1210-0027	32-2110-0027	32-2210-0027
U 2	.78	14°	9°	32-1120-0027	32-1220-0027	32-2120-0027	32-2220-0027
U 3	.25	7°	5°	32-1130-0027	32-1230-0027	32-2130-0027	32-2230-0027
U 3/Hk	.37	7°	5°	32-113D-0027	32-123D-0027	32-213D-0027	32-223D-0027
U 4-5	.48	0°	0°	32-1540-0027	32-1540-0027	—	—
U 4-5/Extra Torque	.48	-7°	0°	32-1540-0029	32-1540-0029	—	—
U 4-5/Hk	.48	0°	0°	32-114M-0027	32-124M-0027	—	—

Mandibular

L 1-2	.97	-1°	0°	32-1610-0010	32-1610-0010	32-2610-0010	32-2610-0010
L 3	.25	7°	5°	32-1430-0027	32-1330-0027	32-2430-0027	32-2330-0027
L 3/Hk	.25	7°	5°	32-143D-0027	32-133D-0027	32-243D-0027	32-233D-0027
L 4-5	.28	0°	0°	32-1640-0027	32-1640-0027	—	—
L 4-5/Hk	.28	0°	0°	32-144D-0027	32-134D-0027	—	—
L 4/Extra Torque	.36	-11°	0°	32-1640-0029	32-1640-0029	—	—
L 5/Extra Torque	.36	-17°	0°	32-1650-0029	32-1650-0029	—	—

LEGEND Medium BIO V-Slot

Maxillary

Tooth	I/O mm	Torque (°)	Angulation (°)	P/N			
				.018"		.022"	
				R	L	R	L
U 1	.41	22°	5°	32-1110-0028	32-1210-0028	32-2110-0028	32-2210-0028
U 2	.93	14°	9°	32-1120-0028	32-1220-0028	32-2120-0028	32-2220-0028
U 3	.36	7°	5°	32-1130-0028	32-1230-0028	32-2130-0028	32-2230-0028
U 3/Hk	.36	7°	5°	32-113D-0028	32-123D-0028	32-213D-0028	32-223D-0028
U 4-5/univ.	.43	0°	0°	32-1540-0040	32-1540-0040	32-2540-0040	32-2540-0040

Mandibular

L 1-2	1.09	0°	0°	32-1610-0034	32-1610-0034	32-2610-0034	32-2610-0034
L 3	.36	7°	5°	32-1430-0028	32-1330-0028	32-2430-0028	32-2330-0028
L 3/Hk	.36	7°	5°	32-143D-0028	32-133D-0028	32-243D-0028	32-233D-0028
L 4/univ.	.36	-11°	0°	32-1640-0029	32-1640-0029	—	—
L 5/univ.	.36	-17°	0°	32-1650-0029	32-1650-0029	—	—

LEGEND

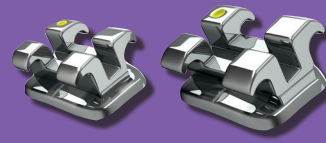
LEGEND Medium V-Slot/BI

Maxillary

Tooth	I/O mm	Torque (°)	Angulation (°)	P/N			
				.018"		.022"	
				R	L	R	L
U 1	.41	12°	5°	32-1110-0034	32-1210-0034	32-2110-0034	32-2210-0034
U 2	.93	8°	9°	32-1120-0034	32-1220-0034	32-2120-0034	32-2220-0034
U 3	.36	0°	7°	32-1130-0040	32-1230-0040	32-2130-0040	32-2230-0040
U 3	.36	-2°	7°	32-1130-0034	32-1230-0034	32-2130-0034	32-2230-0034
U 3/Hk	.36	0°	7°	32-113D-0040	32-123D-0040	32-213D-0040	32-223D-0040
U 3/Hk	.36	-2°	7°	32-113D-0034	32-123D-0034	32-213D-0034	32-223D-0034
U 4/Hk	.43	0°	0°	—	—	32-214M-0040	32-224M-0040
U 4-5	.43	0°	0°	32-1540-0040	32-1540-0040	32-2540-0040	32-2540-0040
U 4-5	.43	-7°	0°	32-1540-0034	32-1540-0034	32-2540-0034	32-2540-0034
U 4-5/Hk	.43	-7°	0°	32-114M-0034	32-124M-0034	32-214M-0034	32-224M-0034
U 4-5/Hk	.43	0°	0°	—	—	32-214M-0040	32-224M-0040
U 4-5/Off. Base	.43	-7°	0°	32-1540-0035	32-1540-0035	32-2540-0035	32-2540-0035

Mandibular

Tooth	I/O mm	Torque (°)	Angulation (°)	P/N			
				.018"		.022"	
				R	L	R	L
L 1-2	1.09	0°	0°	32-1610-0034	32-1610-0034	32-2610-0034	32-2610-0034
L 3	.36	-5°	7°	32-1430-0034	32-1330-0034	32-2430-0034	32-2330-0034
L 3/Hk	.36	-5°	7°	32-143D-0034	32-133D-0034	32-243D-0034	32-233D-0034
L 3/Hk	.36	0°	5°	—	—	32-243D-0040	32-233D-0040
L 4-5	.36	0°	0°	32-1640-0040	32-1640-0040	32-2640-0040	32-2640-0040
L 4	.36	-11°	0°	32-1640-0034	32-1640-0034	32-2640-0034	32-2640-0034
L 4/Off. Base	.36	-11°	0°	32-1640-0035	32-1640-0035	32-2640-0035	32-2640-0035
L 4/Hk	.36	-11°	0°	32-144D-0034	32-134D-0034	32-244D-0034	32-234D-0034
L 4/Hk	.36	0°	0°	—	—	32-244D-0040	32-234D-0040
L 4-5/Off. Base	.36	0°	0°	32-1640-0041	32-1640-0041	32-2640-0041	32-2640-0041
L 5	.36	-17°	0°	32-1650-0034	32-1650-0034	32-2650-0034	32-2650-0034
L 5/Hk	.36	-17°	0°	32-145D-0034	32-135D-0034	32-245D-0034	32-235D-0034
L 5/Off. Base	.36	-17°	0°	32-1650-0035	32-1650-0035	32-2650-0035	32-2650-0035



LEGEND Medium Polar

Maxillary

				P/N	
Tooth	I/O mm	Torque (°)	Angulation (°)	.018"	
				R	L
U 1	1.10	20°	3°	32-1110-0022	32-1210-0022
U 2	1.10	14°	9°	32-1120-0022	32-1220-0022
U 3/Hk	.40	-2°	6°	32-113D-0022	32-123D-0022
U 4-5	.70	-10°	2°	32-1140-0022	32-1240-0022

Mandibular

				P/N	
Tooth	I/O mm	Torque (°)	Angulation (°)	.018"	
				R	L
L 1-2	1.10	0°	0°	32-1610-0022	32-1610-0022
L 3/Hk	.40	0°	5°	32-143D-0022	32-133D-0022
L 4	.40	-10°	2°	32-1440-0022	32-1340-0022
L 5	.40	-15°	2°	32-1450-0022	32-1350-0022

LEGEND Medium Kits

Prescription	Upper arch	Lower arch	Hook on	P/N	
				.018"	.022"
Roth Type	5-5	5-5	—	32-1CC0-0010	32-2CC0-0010
Roth Type	5-5	5-5	3	32-1CC3-0010	32-2CC3-0010
Roth Type	5-5	5-5	3,4,5	32-1CC5-0010	32-2CC5-0010
Extra-Torque	5-5	5-5	3	32-1CC3-0030	32-2CC3-0030
Extra-Torque	5-5	5-5	3,4,5	32-1CC5-0030	32-2CC5-0030
MBT*	5-5	5-5	—	32-1CC0-0020	32-2CC0-0020
MBT*	5-5	5-5	3	32-1CC3-0020	32-2CC3-0020
MBT*	5-5	5-5	3,4,5	32-1CC5-0020	32-2CC5-0020

LEGEND

Weldable LEGEND Mini

Roth Type

Maxillary

				P/N			
Tooth	I/O mm	Torque (°)	Angulation (°)	.018"		.022"	
				R	L	R	L
U 4	.37	-7°	0°	34-1540-0010	34-1540-0010	34-2540-0010	34-2540-0010

Mandibular

				P/N			
L 4	.28	-17°	0°	34-1640-0010	34-1640-0010	34-2640-0010	34-2640-0010
L 5	.33	-22°	0°	34-1650-0010	34-1650-0010	34-2650-0010	34-2650-0010

Weldable LEGEND Medium

Roth Type

Maxillary

				P/N			
Tooth		Torque (°)	Angulation (°)	.018"		.022"	
				R	L	R	L
U 4		-7°	0°	33-1540-0010	33-1540-0010	33-2540-0010	33-2540-0010

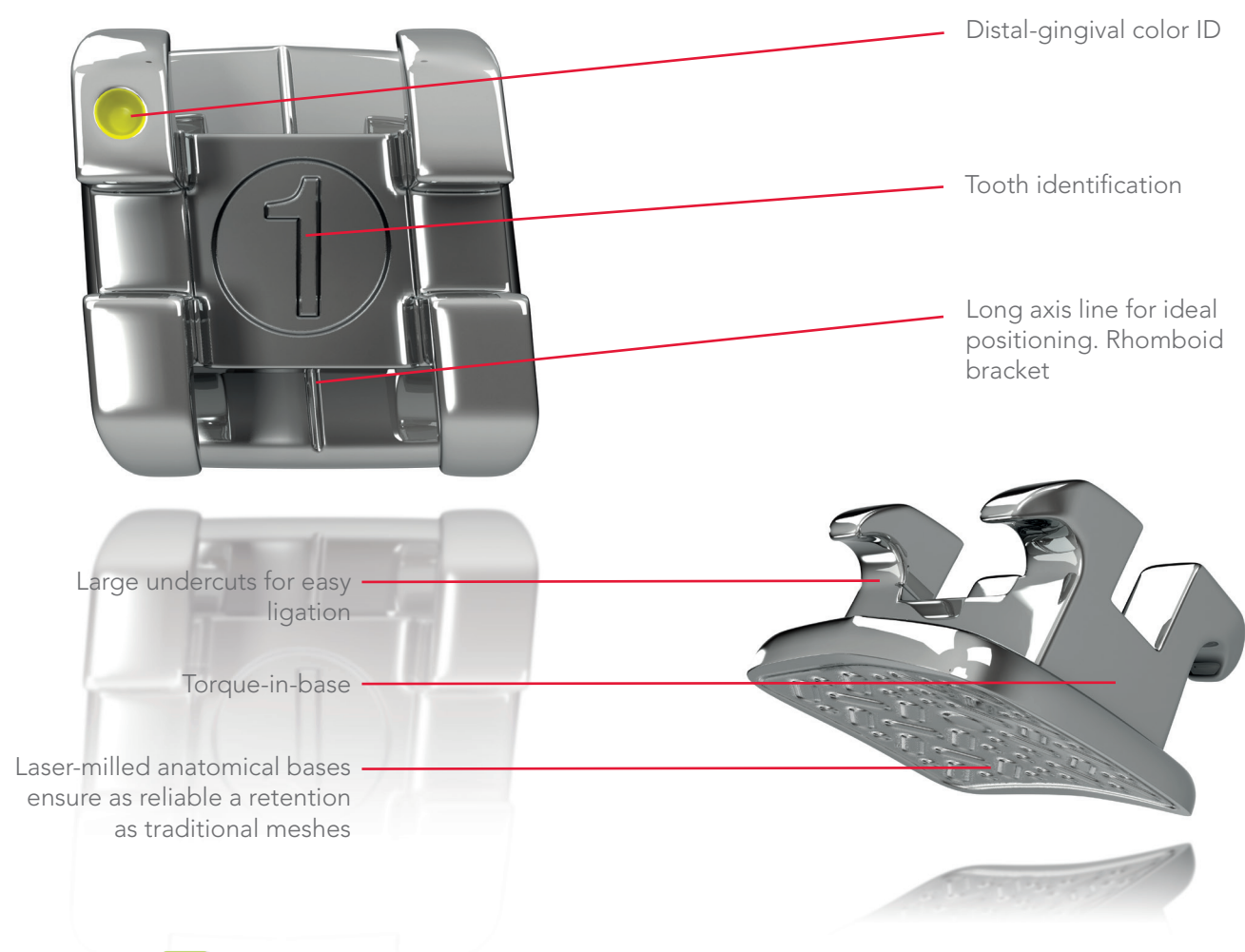
Mandibular

				P/N			
L 4		-17°	0°	33-1640-0010	33-1640-0010	33-2640-0010	33-2640-0010
L 5		-22°	0°	33-1650-0010	33-1650-0010	33-2650-0010	33-2650-0010



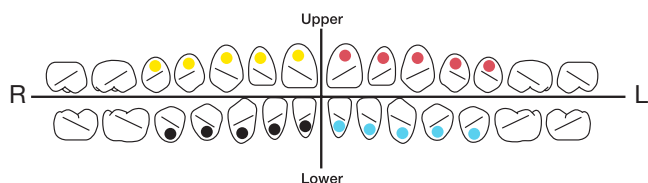
AXCESS

Also manufactured in Japan by Tomy® Inc., this entry point bracket descends from the MIM (Metal Injection Molding) technology. All the information (3 orders) is built-in. The torque is in base. The laser-milled anatomical base ensures as reliable a retention as traditional meshes.



Color codes

The distal-gingival color code allows an identification of the bracket to prevent bonding errors.





AXCESS

Maxillary

				P/N			
Tooth	I/O mm	Torque (°)	Angulation (°)	.018"		.022"	
				R	L	R	L
U 1	.73	12°	5°	30-1110-0010	30-1210-0010	30-2110-0010	30-2210-0010
U 2	1.19	8°	9°	30-1120-0010	30-1220-0010	30-2120-0010	30-2220-0010
U 3/Hk	.56	0°	13°	30-113D-0010	30-123D-0010	30-213D-0010	30-223D-0010
U 3/Hk Barbosa	.56	0°	13°	—	—	30-213D-0014	30-223D-0014
U 4-5	.56	-7°	0°	30-1540-0010	30-1540-0010	30-2540-0010	30-2540-0010
U 4-5/Hk	.56	-7°	0°	30-114M-0010	30-124M-0010	30-214M-0010	30-224M-0010

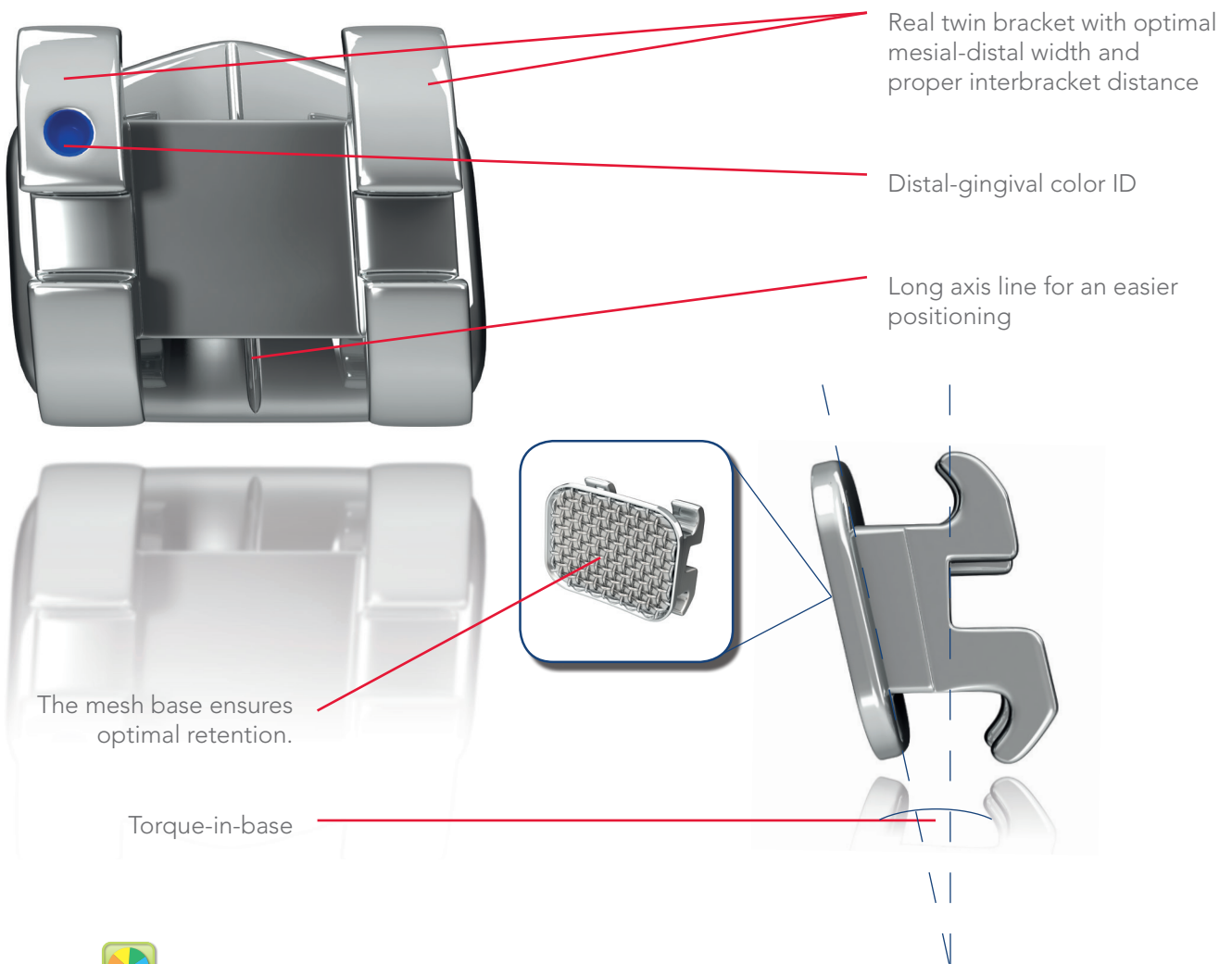
Mandibular

				P/N			
Tooth	I/O mm	Torque (°)	Angulation (°)	.018"		.022"	
				R	L	R	L
L 1-2	1.19	-1°	0°	30-1610-0010	30-1610-0010	30-2610-0010	30-2610-0010
L 3/Hk	.43	-11°	7°	30-143D-0010	30-133D-0010	30-243D-0010	30-233D-0010
L 3/Hk Barbosa	.43	-11°	7°	30-143D0014	30-133D-0014	30-243D-0014	30-233D-0014
L 4 Offset base	.40	-17°	0°	30-1640-0013	30-1640-0013	30-2640-0013	30-2640-0013
L 4/Hk Offset base	.40	-17°	0°	30-144D-0010	30-134D-0010	30-244D-0010	30-234D-0010
L 5 Offset base	.38	-22°	0°	30-1650-0013	30-1650-0013	30-2650-0013	30-2650-0013
L 5/Hk Offset base	.38	-22°	0°	30-145D-0010	30-135D-0010	30-245D-0010	30-235D-0010



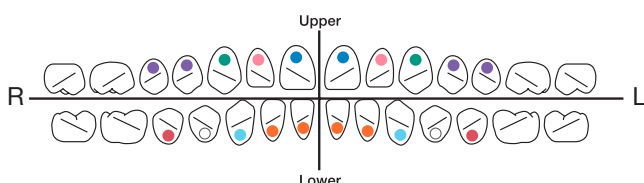
Legacy & Legacy Mini

This bracket was programmed according to Dr Roth's philosophy. It is the most accomplished straight wire bracket information-wise. In addition to in/out (1st order), torque, tip and offset are programmed on cuspids and bicuspids in order to correct the effects of parasitic rotations due to positioning mechanics.



Color codes

For some prescriptions, these color codes may be different on the bicuspids.



Legacy & Legacy mini

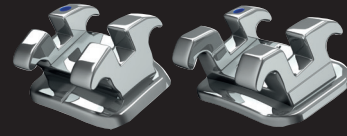
Legacy Mini Roth Type

Maxillary

					P/N	
Tooth	I/O mm	Torque (°)	Angulation (°)	Rotation (°)	.022"	
					R	L
U 1	.25	12°	5°	0°	27-2110-0010	27-2210-0010
U 2	.78	8°	9°	0°	27-2120-0010	27-2220-0010
U 3	.25	-2°	13°	4°m	27-2130-0010	27-2230-0010
U 3/Hk	.25	-2°	13°	4°m	27-213D-0010	27-223D-0010
U 3/Hk Special	.25	-2°	9°	4°m	27-213D-0012	27-223D-0012
U 4	.37	-7°	0°	2°d	27-2140-0010	27-2240-0010
U 4/Hk	.37	-7°	0°	2°d	27-214M-0010	27-224M-0010

Mandibular

					P/N	
Tooth	I/O mm	Torque (°)	Angulation (°)	Rotation (°)	.022"	
					R	L
L 1-2	.97	-1°	2°	0°	27-2410-0010	27-2310-0010
L 1-2/Special Torque	.97	-5°	2°	0°	27-2410-0011	27-2310-0011
L 3	.25	-11°	7°	2°m	27-2430-0010	27-2330-0010
L 3/Hk	.25	-11°	7°	2°m	27-243D-0010	27-233D-0010
L 4/Off. Base	.28	-17°	0°	0°	27-2440-0013	27-2340-0013
L 4/Hk	.28	-17°	0°	4°d	27-244D-0010	27-234D-0010
L 4/Hk, Off. Base	.28	-17°	0°	0°	27-244D-0013	27-234D-0013
L 5/Off. Base	.33	-22°	0°	0°	27-2450-0013	27-2350-0013
L 5/Hk	.33	-22°	0°	4°d	27-245D-0010	27-235D-0010
L 5/Hk, Off. Base	.33	-22°	0°	0°	27-245D-0013	27-235D-0013



Legacy Roth Type

Maxillary








Tooth	I/O mm	Torque (°)	Angulation (°)	P/N	
				.022"	
				R	L
U 1	.25	12°	5°	28-2110-0010	28-2210-0010
U 1/XT	.25	17°	5°	28-2110-0011	28-2210-0011
U 2	.78	8°	9°	28-2120-0010	28-2220-0010
U 2/XT	.78	10°	9°	28-2120-0011	28-2220-0011
U 2/Hk	.78	8°	9°	28-212D-0010	28-222D-0010
U 3	.25	-2°	13°	28-2130-0010	28-2230-0010
U 3/Hk	.25	-2°	13°	28-213D-0010	28-223D-0010
U 3	.25	3°	9°	28-2130-0011	28-2230-0011
U 3/Hk	.25	3°	9°	28-213D-0011	28-223D-0011
U 3	.25	-2°	9°	28-2130-0012	28-2230-0012
U 3/Hk	.25	-2°	9°	28-213D-0012	28-223D-0012
U 4	.37	-7°	2°d	28-2140-0010	28-2240-0010
U 4/Hk	.37	-7°	2°d	28-214D-0010	28-224D-0010
U 4/Hk m.	.37	-7°	0°	28-214M-0010	28-224M-0010

Mandibular

Tooth	I/O mm	Torque (°)	Angulation (°)	.022"	
				R	L
				L 1-2	.97
L 3	.25	-11°	7°	28-2430-0010	28-2330-0010
L 3/Hk	.25	-11°	7°	28-243D-0010	28-233D-0010
L 3/Hk/XT	.25	0°	5°	28-243D-0011	28-233D-0011
L 4	.28	-17°	0°	28-2440-0010	28-2340-0010
L 4/Hk	.28	-17°	0°	28-244D-0010	28-234D-0010
L 5	.33	-22°	0°	28-2450-0010	28-2350-0010
L 5/Hk	.33	-22°	0°	28-245D-0010	28-235D-0010

Standard Edgewise

Twin Edgewise

		Width		P/N	
		mm	.018"	.022"	
	Upper Centrals				
	Double extra-wide	4.0	29-1510-0062	29-2510-0062	
	Double wide	3.2	29-1510-0059	29-2510-0059	
	Upper Laterals				
	Double wide	3.2	—	29-252-59	
	Double medium	2.6	29-1520-0053	29-2520-0053	
	Upper and lower cuspids				
	Double wide	3.2	29-1730-0059	29-2730-0059	
	Double medium	2.6	29-1730-0053	29-2730-0053	
	Medium low profile	2.6	29-1630-0054	—	
	Upper and lower cuspids with hook				
	Wide, hook, UR/LL	3.2	29-153D-0059	29-253D-0059	
	Wide, hook, UL/LR	3.2	29-163D-0059	29-263D-0059	
	Upper bicuspid				
	Offset wing, wide	3.2	29-1540-0061	—	
	Offset wing, medium	2.6	29-1540-0057	29-2540-0057	
	Offset wing, narrow	2.1	—	29-2540-0052	
	Narrow	2.1	—	29-2740-0050	
	Medium	2.6	29-1740-0053	29-2740-0053	
	Upper/Lower Molars				
	Extra-wide	4.0	29-1760-0062	29-2760-0062	
	Wide	3.2	29-1760-0059	29-2760-0059	
	Lower Anteriors				
	Double, low profile, narrow	2.1	29-1610-0051	29-2610-0051	
	Double, low profile, medium	2.6	29-1610-0055	29-2610-0055	
	Double, standard narrow	2.1	29-1610-0050	29-2610-0050	
	Double, standard medium	2.6	—	29-2610-0053	
	Lower Bicuspid				
	Low profile medium	2.6	29-1640-0055	29-2640-0055	
	Low profile medium, kidney-shaped	2.6	—	29-2640-0058	
	Low profile narrow	2.1	—	29-2640-0051	



Standard Edgewise

Single Edgewise (Tweed)

	Width	P/N
	mm	.022"

	Centrals	
Extra-wide	2.6	26-2510-0062
Wide	2.0	26-2510-0059

	Laterals	
Extra-wide	2.6	26-2520-0062
Wide	2.0	26-2520-0059

	Cuspids	
Extra-wide	2.6	26-2730-0062
Wide	2.0	26-2730-0059

	Bicuspids	
Wide, low profile	2.0	26-2640-0060
Wide, standard	2.0	26-2740-0059

	Lower Anteriors	
Trapezoid	1.3	26-2610-0051
Narrow, standard	1.3	26-2610-0050
Wide, low profile	2.0	26-2610-0060
Extra-wide, standard	2.6	26-2610-0062

